

The Link – Community and Information Centre
1 McClymont Way, Strathnairn ACT 2615
PO Box 484, Kippax ACT 2615
T. 1800 316 900

Ginninderry

23 April 2026



Community-Scale Battery - Tredwell Street

Dear Ginninderry Resident,

As part of our commitment to renewable energy and an all-electric community, Ginninderry has been working closely with Evoenergy to trial community-scale energy storage solutions to mitigate the need for traditional network upgrades and provide additional electrical capacity to the surrounding area.

The first of its kind in the ACT, this community-scale battery will import and export energy through Evoenergy's existing padmount substation (the grey box sitting alongside the battery) to help control power flows by storing and releasing power at certain times of the day and night.

The size of the battery is equivalent to three Tesla car batteries or more than 20 household batteries. It can store 275kWh of energy whilst sustaining 250kW of power output for 1 hour. The battery, including all electrical and safety equipment, will be housed in purpose-built enclosures which have been designed to look like the adjacent padmount substation.

The site selected for this battery project is Block 20, Section 19, Strathnairn (near Tredwell Street opposite Blundell Place - see map on following page for more detail). This location is one of several specific areas allocated to facilitate battery storage projects. These blocks were identified through the Ginninderry Estate Development Plan (the Development Plan) and in Block Disclosure Plans as 'future microgrid buildings'. As technology has progressed, the size and scale of these systems have decreased. The area needed for this battery project is 3m x 3m, compared to the 15m x 5.6m allowed for in the Development Plan.

Installation of this battery will occur between April and July 2026. A forklift or small crane will be used to unload the battery from a flatbed truck into position on Tredwell Street. Evoenergy will be required to turn off the power supply to some residential properties during the installation process. Any affected residences will be provided with a minimum of 20 business days' written notice by Evoenergy prior to any power outage.

Once installation is complete, the battery will be wrapped in an artwork chosen from the Ginninderry Design Library. The battery and some installation costs have been kindly contributed by Squadron Energy.

For construction and project updates, please visit:

<https://ginninderry.com/development-projects-and-initiatives/> or scan the QR code above.

Regards

Jessica Stewart

Head of Sustainability and Community Development



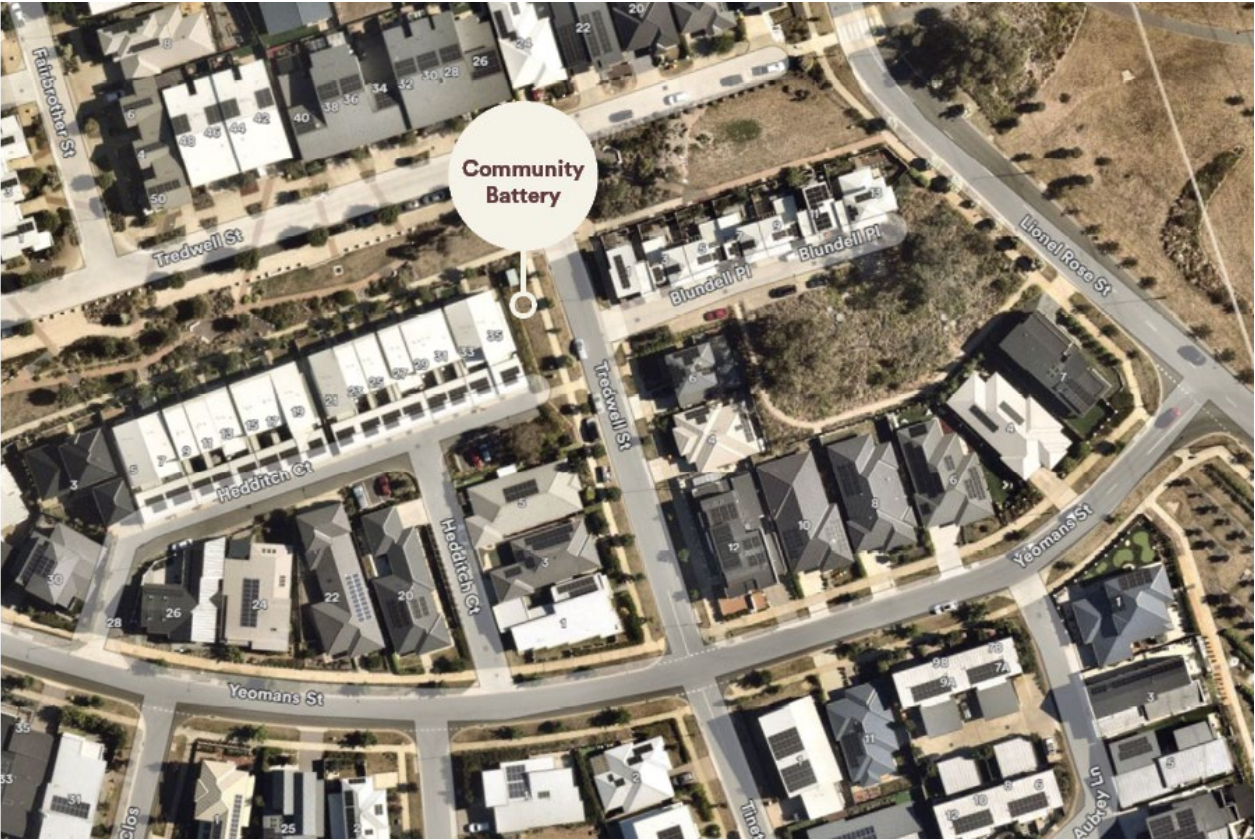
ACT
Government

Suburban Land
Agency



RIVERVIEW
GROUP

Location of the community-scale battery



Indicative view of the community-scale battery

