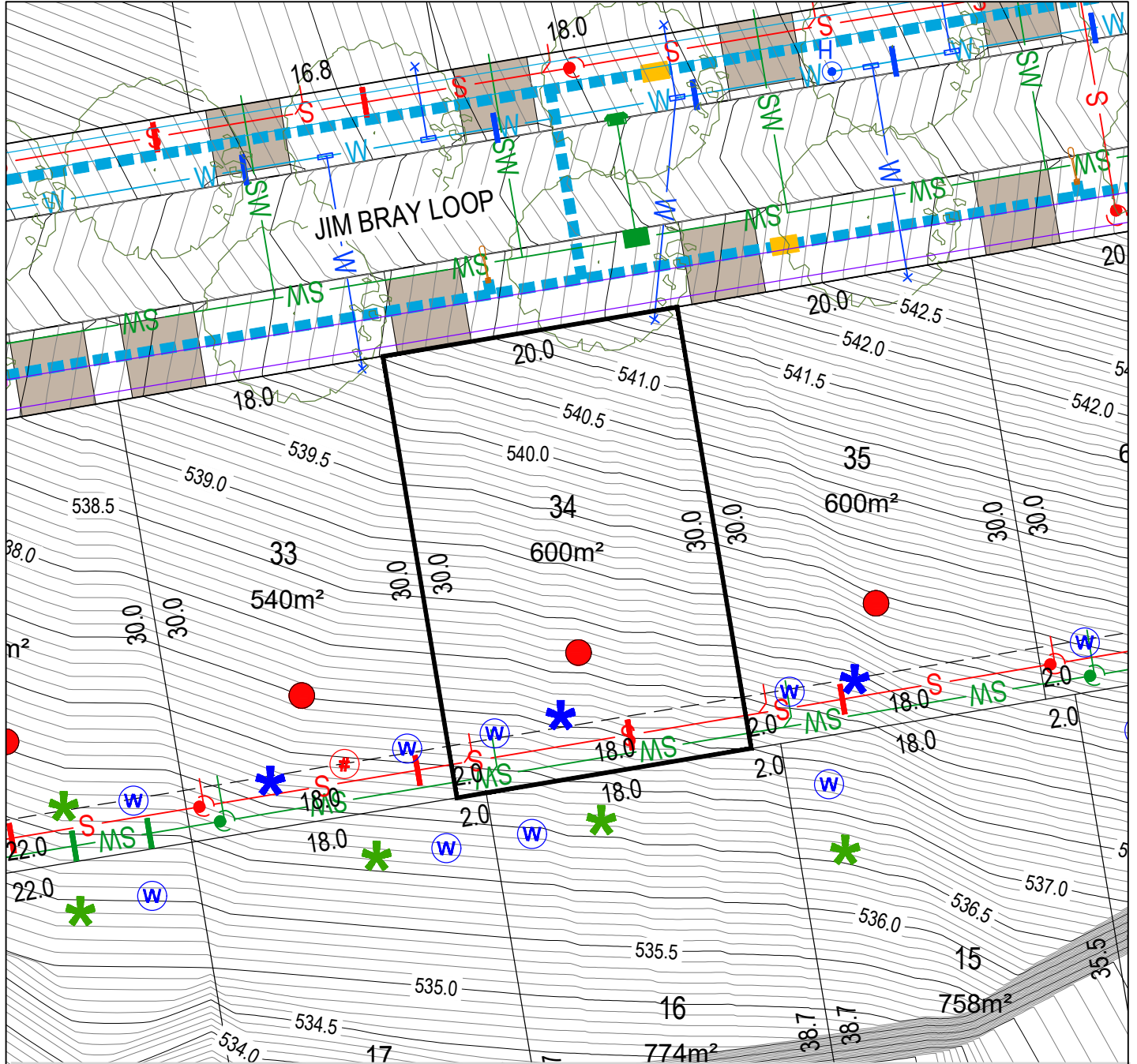




### Block Disclosure Plan



BLOCK LAYOUT - SCALE 1:400

ISSUE DATE: 03/02/2025

#### LEGEND

|  |   |  |   |  |  |  |                                       |
|--|---|--|---|--|--|--|---------------------------------------|
|  | LOT BOUNDARY                            |  | SEWER MAIN / MANHOLE / TIE                |  | SERVICES TRENCH                              |  | SUBSTATION                            |
|  | EASEMENT                                |  | STORMWATER MAIN / SUMP / MANHOLE / TIE    |  | NBN Co PIT                                   |  | STREET TREES                          |
|  | CONTOUR 0.5m INTERVAL                   |  | WATER MAIN / STOP VALVE / HYDRANT / TIE   |  | STREETLIGHT / OPEN SPACE PEDESTRAIN LIGHTING |  | GARAGE OFFSET FROM REAR BOUNDARY      |
|  | CONTOUR 0.1m INTERVAL                   |  | WATER MAIN (IRRIGATION)                   |  | ABOVE GROUND LINK PILLAR                     |  | BLOCK SUBJECT TO MID-SIZED PROVISIONS |
|  | RETAINING WALL                          |  | REINFORCED CONCRETE DRIVEWAY BY PURCHASER |  | ABOVE GROUND MINI PILLAR                     |  | LIMITED DEVELOPMENT POTENTIAL         |
|  | MANDATORY TWO(2) STOREYS                |  |   |  | STAGE BOUNDARY                               |  | BAL 12.5/ BAL 19 BUILDING STANDARD    |
|  | SEWER MAINTENANCE ACCESS ROUTE REQUIRED |  |   |  |  |  |                                       |

PLEASE NOTE: INFORMATION SHOWN IN THIS DRAWING IS PRELIMINARY ONLY, AND SUBJECT TO CHANGE PRIOR FINAL DESIGN. REFER ALSO TO PLANNING CONTROLS PLAN AND FENCING CONTROLS PLAN.

Disclaimer: All care has been taken in the preparation of this material. No responsibility is taken by the vendor for any errors or omissions, and details may be subject to change. All road designs, contours, block sizes, block dimensions, easements, services, ties and trees are preliminary only and are subject to change.

WATER TANK REQUIREMENTS REFER TABLE ON THE RIGHT

| BLOCK SIZE (m²) | MANDATORY MINIMUM WATER TANK SIZE (ML) |
|-----------------|--|
| 251-350         | 2                                      |
| 351-599         | 4                                      |
| 600-800         | 8                                      |
| >801            | 10                                     |