

Ginninderry

Drop in Session

2024 – Year in Review



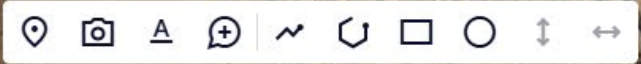
ACT
Government

Suburban Land
Agency

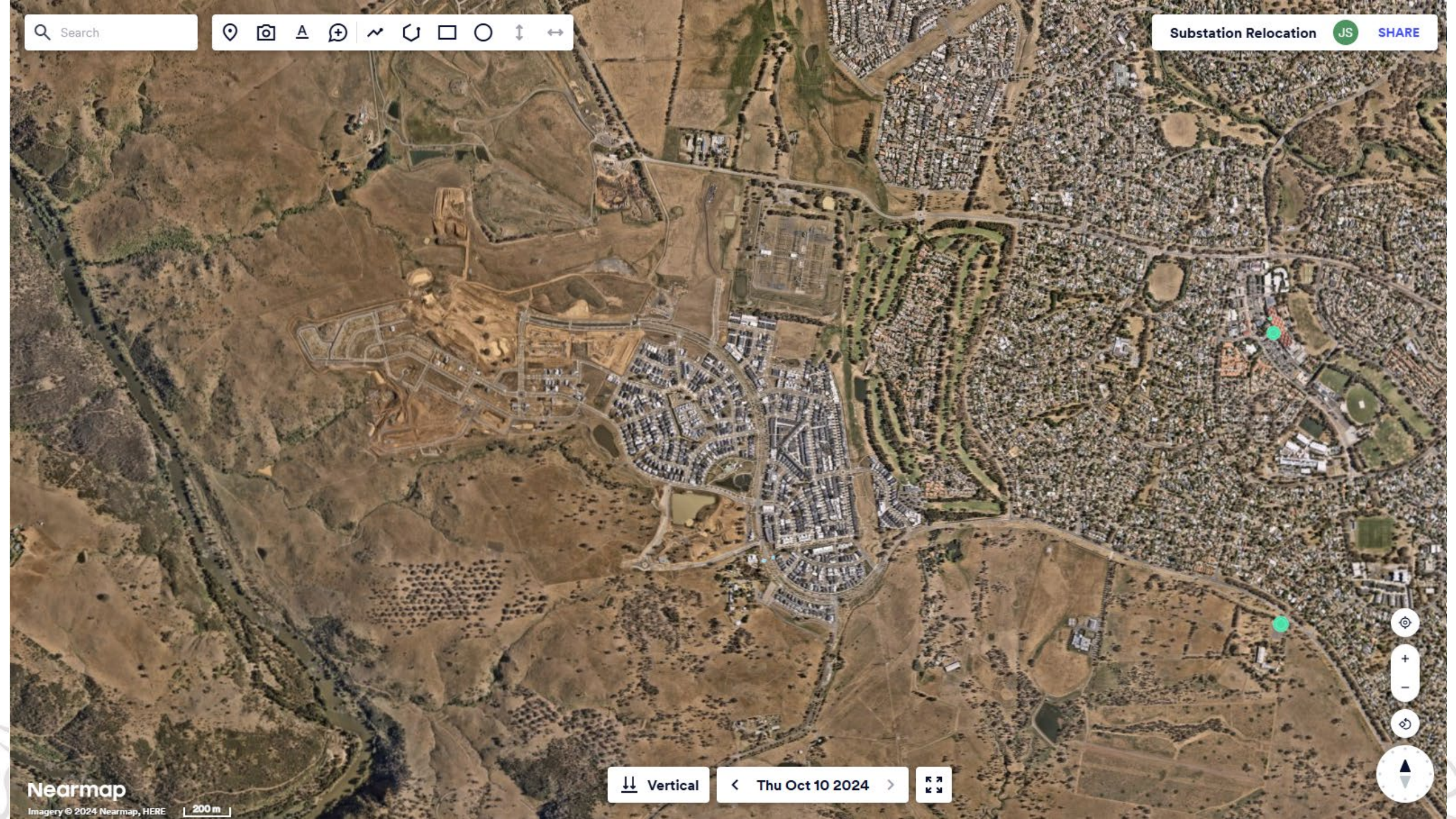


RIVERVIEW
GROUP

Search



Substation Relocation JS SHARE



JANUARY

TEMPORARY DOG PARK OPENING





Ginninderry 

MARCH

IFTAR at The Link



Helping ACT and Kippax Uniting Care

MARCH

EASTER IN THE PARK



Uniting Care Kippax

APRIL

IFTAR at Kippax



Helping ACT and Kippax Uniting Care

APRIL

FAMILY AND COMMUNITY FUN DAY



Sustainable House Day



Welcoming Amanda!

Welcome to the Corridor

Ginninderry Conservation Trust

0 250 500 Me

THE LIN
♿ P

Woodland Loop - 4km one way.
Travel through the planted woodland towards the bridges. Many steep steps.

Nguurung Bila Loop - 3.8km one way.
Named after the Ngunawal word for 'river campsite'. Steep steps.

Shepherds Lookout Loop
Corridor entry to Shepherds: 3.4km one way.
Walloo Spur to Burin Lookout: 1.2km one way.

River Descent Tracks
1.7km from Macnamara to river.
Travel from Macnamara down to the Murrumbidgee River with some wonderful views en route. Many steep steps.

Maintenance Track
3.4km Shepherds to Jahli's.
Shared zone: pedestrians, management vehicles and bicycles.

Corridor Boundary
The area currently managed by the Ginninderry Conservation Trust.

Landmarks on map: Suspension Bridges, TRIANGLE DAM, GODDAMON CREEK, Burin Lookout, Woodland Lookout, WOODLAND DAM, STRATHNAIRN ARTS, Cafe, LEAKY DAM, DOUBLE DAM, STOCKDILL DR, Wallaroo Spur, Gruner's Vista, CHERRY DAM, Jahli's Lookout, Nguurung Lookout, Shepherds Lookout.



10km of new tracks

JULY

GREAT GINNINDERRY BAKE-OFF



Ginninderry ✱

Ginninderry Residents

CONSERVATION AND CELEBRATION OF HERITAGE AND CULTURE

Welcome to Country	Wally Bell	Buru Ngunawal Aboriginal Corporation
Ginninderry – What’s in a Name?	Jessica Stewart	Ginninderry Joint Venture
Preserving Ginninderry’s History: Reconnecting with Country through Archaeology	Lyn O’Brien	Past Traces
Prime Ministers, Panel Vans and Pirate Ships - the Ginninderry Local History Study	Stevie Skitmore	Australian National University
Ginninderry Living Lab Framework	Bethaney Turner	University of Canberra
The nature dividend? Green placemaking strategies and practices on the urban fringe	Yu Yeong	Australian National University



TREES AND THE ANIMALS THAT USE THEM

Mature Trees: Living their best life at Ginninderry	Phil Gibbons	Australian National University
What have we learnt from the trees at Ginninderry?	Phil Gibbons	Australian National University
Exploring the conservation of mature trees in urban areas	Cara Parsons	Australian National University
What makes a good tree? We used AI to ask birds	Alex Holland	University of Melbourne; Deep Design Lab; ANU
Monitoring avifauna in threatened Yellow Box-Red Gum Woodlands	Chris Davey	Canberra Birds
Scarlet Robin: Abundance and Habitat use in the woodlands of Ginninderry and the wider ACT	Stuart Rae	The Scarlet Robin Project
Little Eagle behavioural ecology in the ACT and beyond	Stuart Rae	The Little Eagle Reference Group

AQUATIC ECOSYSTEMS

Water Quality Monitoring of the Ginninderry Development	Isobel Walcott	University of Canberra
Beyond the surface: the wonders of waterbugs	Yolandi Vermaak	Ginninderra Catchment Group
Dam de-watering and mighty turtles	Bruno Ferronato	Ginninderra Catchment Group
Fantastic Frogs at Ginninderry	Anke Maria Hoefer	Ginninderra Catchment Group
Environmental DNA comparison between institutions in the Ginninderry Conservation Corridor	Bridie Noble	Ginninderry Conservation Trust

ECOLOGICAL RESTORATION AND CONSERVATION OF BIODIVERSITY

Conservation and genetics of the pink-tailed worm-lizard	Linda Neaves	Australian National University
Identifying methods for translocation of the Golden Sun Moth in the reserves of the ACT	Maisie Walker Stelling	Australian National University
Diet and habitat use of a mammalian herbivore guild	Samantha Shippley	Australian National University
Tracking and mapping the complex lives of eastern brown snakes	Gavin Smith	Australian National University
Conditioned Taste Aversion in Foxes	Cassandra Holt	Australian National University
Wombats in the corridor	Yolandi Vermaak	Wombat Rescue
Ginninderry’s Scrape and Sow	John Fitz Gerald	Friends of Grassland

URBAN DESIGN AND COMMUNITY

Urban Design: Planting for Pollinators	Julie Armstrong	ACT for Bees and other Pollinators
Greening our Streets: The Impact of Landscaping on the Urban Heat Island	Jessica Stewart	Ginninderry Joint Venture
Art in Public Space: Ginninderry’s Strategic Framework	Tom Gray	Ginninderry Joint Venture
Route 903: The little blue Poncho that could	Luke Powter	Transport Canberra City Services

SEPTEMBER

INSPIRE FESTIVAL



Strathnairn Arts

Spark
Ginninderry Training +
Employment Initiative



**Renewables Pre-employment
Program for Migrants and Refugees**

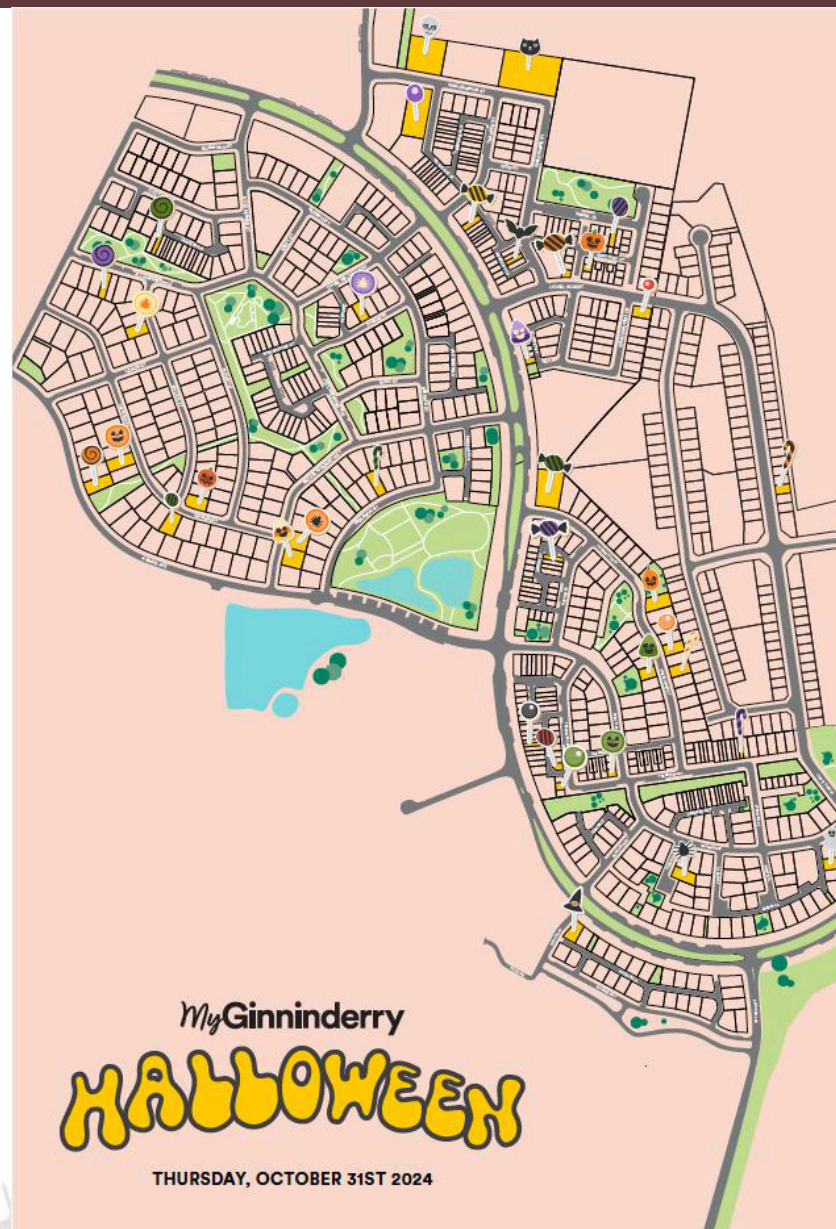


Ginninderry

Renewables Pre-Employment Program for Migrants and Refugees



Ginninderry 



Movie Night and Community Walking Map



NOVEMBER

PRE-RELEASE WOMBAT ENCLOSURE



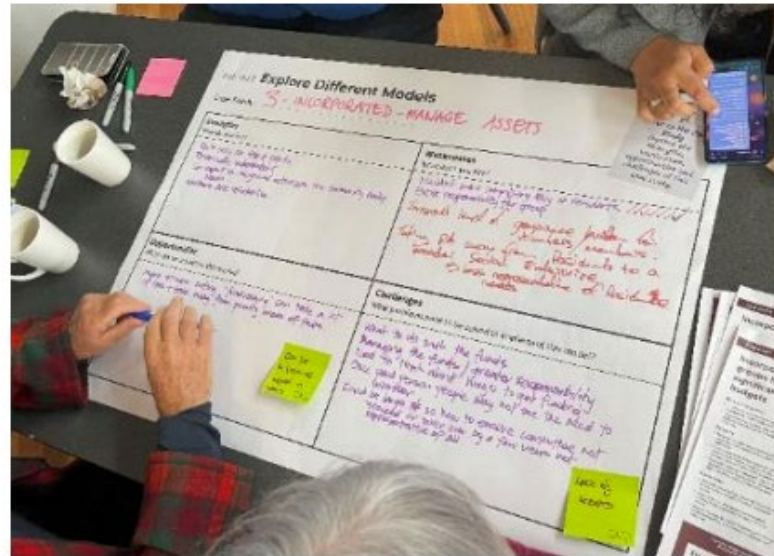
Collaboration between Wombat Rescue,
Ginninderry Conservation Trust and Prague Zoo

Ginninderry 

Opened By The First Lady Of The Czech Republic



COMMUNITY WORKSHOPS



CASE STUDY 1

Local residents' association

Aims and objectives

- To represent, voice and advance the interests of residents, particularly those interested in the area
- To safeguard and enhance the environment, manage and improve the area for the benefit of residents and visitors
- To bring residents together to discuss and act on issues of common concern

Governance

- Members are responsible for the association and its activities
- Regular meetings to discuss and decide on matters affecting the association and the community
- Adherence to a constitution setting the aims and responsibilities of the association
- Independent governance under external regulation

Structure

- Committee or sub-committee, with president, secretary, treasurer, and general committee
- Subcommittees or working groups may be formed for specific projects or services

Funding

- Using various activities (e.g. community events, grants)
- Grants or subsidies from local government or charitable organisations
- Membership fees or voluntary contributions

Membership

- Membership open to all residents within the community
- Quality of membership may include voting rights, access to association resources, and participation in activities

CASE STUDY 2

Residents' association in a new suburb - developer supported

Aims and objectives

- Facilitate community engagement and cohesion
- Represent the views and interests of residents
- Advocate for improved and sustainable development of the suburb
- Establish and coordinate with the developer, local government, and other stakeholders to address issues and enhance services well being
- Establish and coordinate with other community groups, including local government, and other stakeholders to address issues

Governance

- Developer or trustee or resident
- Independent governance and external regulation
- Regular meetings to discuss and decide on matters affecting the association and the community
- Adherence to a constitution setting the aims and responsibilities of the association
- Independent governance under external regulation

Structure

- Committee or sub-committee, with president, secretary, treasurer, and general committee
- Subcommittees or working groups may be formed for specific projects or services

Funding

- Using various activities (e.g. community events, grants)
- Grants or subsidies from local government or charitable organisations
- Membership fees or voluntary contributions

Membership

- Membership open to all residents within the community
- Quality of membership may include voting rights, access to association resources, and participation in activities

CASE STUDY 3

Incorporated community resident groups that manage significant assets or budgets

Aims and objectives

- To represent community on behalf of and management of land and assets
- To provide a venue for residents to discuss and act on issues of common concern
- To bring residents together to discuss and act on issues of common concern

Governance

- Members are responsible for the association and its activities
- Regular meetings to discuss and decide on matters affecting the association and the community
- Adherence to a constitution setting the aims and responsibilities of the association
- Independent governance under external regulation

Structure

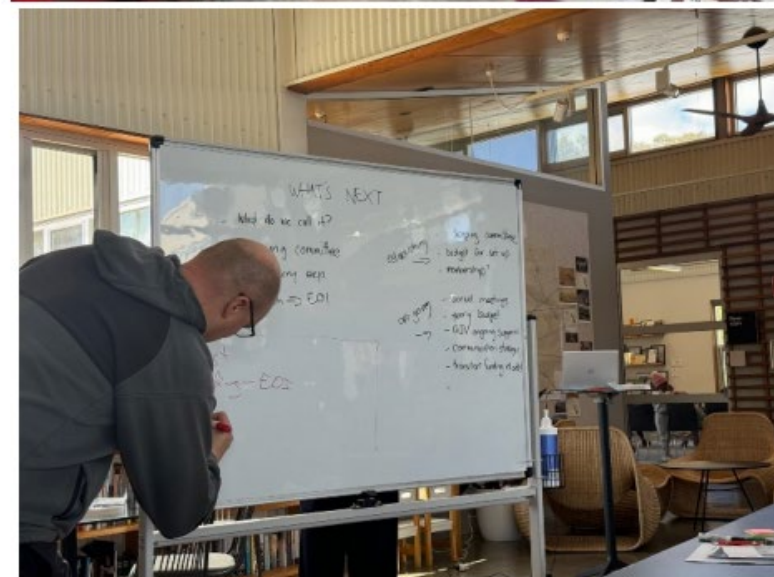
- Committee or sub-committee, with president, secretary, treasurer, and general committee
- Subcommittees or working groups may be formed for specific projects or services

Funding

- Using various activities (e.g. community events, grants)
- Grants or subsidies from local government or charitable organisations
- Membership fees or voluntary contributions

Membership

- Membership open to all residents within the community
- Quality of membership may include voting rights, access to association resources, and participation in activities

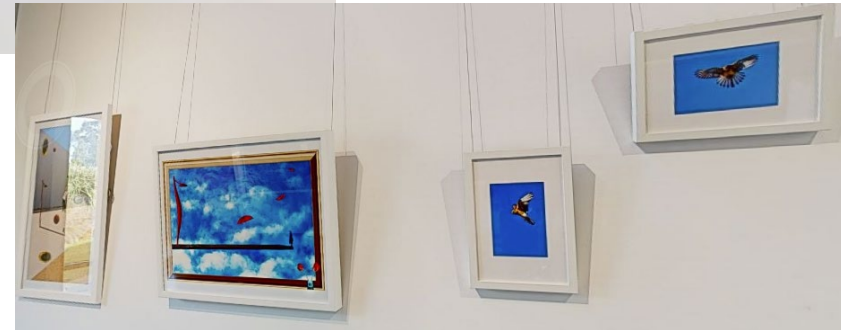


Activity: What's needed?

Things to do	Responsibilities/skills	Support / resources from community?	Support / resources from Ginninderry?	What else?
E.g. Establishment of an association	Knowledge of the Corporations ACT	Previous experience in an association	Training	Administrative support
Name of Assoc. to be discussed by committee			Funding for lodgement, Legal advice	
Getting community involved?	Specialist appropriate skills in marketing		Letter drops, new FB page, Ginninderry resources, Notice boards...	new FB page? printing costs?
Who is involved? boundaries?	invite members to use these			
			word of mouth, Kids programs (to bring in parents)	



ART EXHIBITIONS



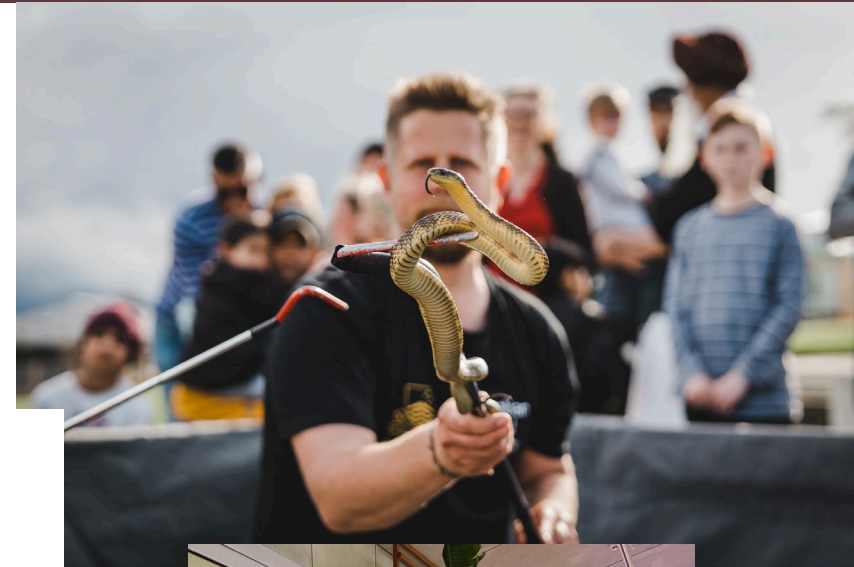
Ginninderry*

The Link



This Year's Achievements

2023/2024



School Holidays

Music In The Bush

Mon 30th Sep (ages 3-7 approx.)

Connections: Art & Conservation

With Strathnairn Arts

Thurs 3rd Oct & Thurs 10th Oct (ages 8-14 approx.)

Junior Rangers

Tues 8th Oct (ages 4-10 approx.)

More info:

<https://www.ginninderry.org/events>



Ginninderry*