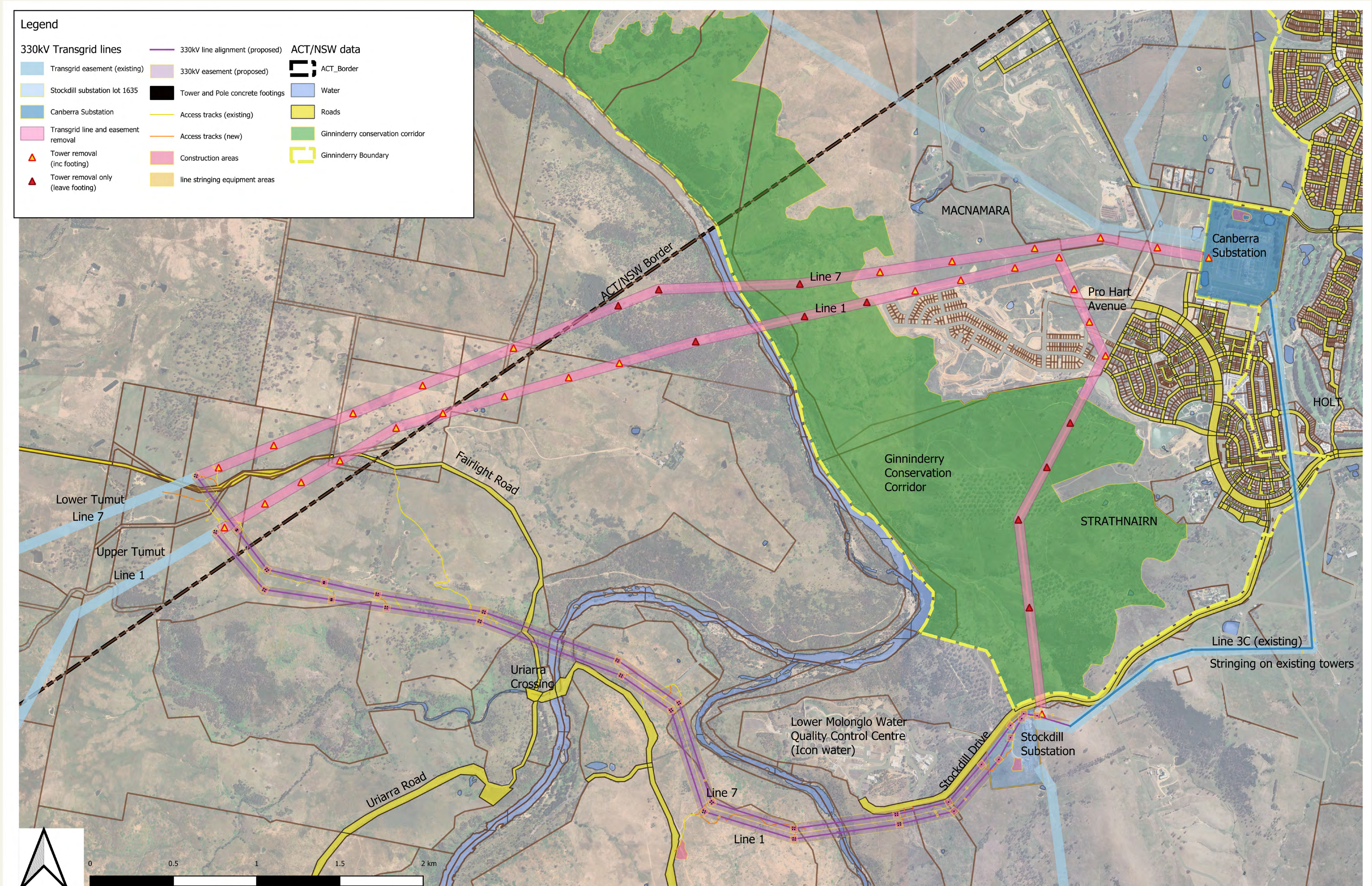


# Proposed Transmission Line Realignment



## What?

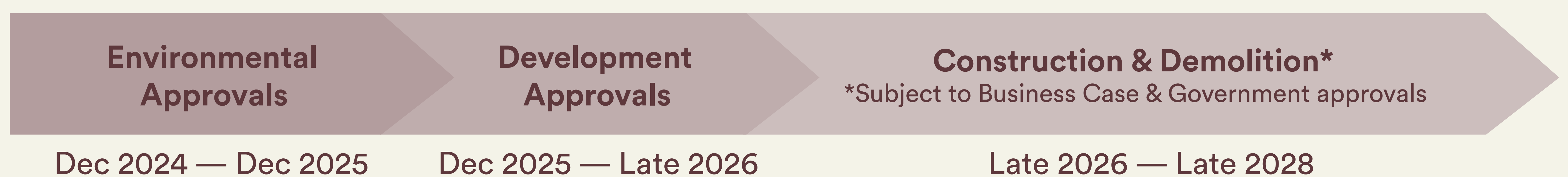
The Ginninderry Joint Venture is exploring the options to relocate two transmission lines - the Lower Tumut (Line 7) and Upper Tumut (Line 1) 330kV transmission lines. Ginninderry's proposal is to:

- decommission and remove part of the Upper Tumut (Line 1) and Lower Tumut (Line 7) transmission lines;
- divert transmission lines from near the ACT/NSW border and extend southeast, crossing the Molonglo and Murrumbidgee Rivers in the ACT and then connecting to existing towers at the Stockdill Substation on Stockdill Drive in Belconnen, ACT; and
- string an extension line (Line 3C) onto existing towers running between the Canberra and Stockdill Substations along the edge of the suburb of Holt. This additional line would be a continuation of the new Lower Tumut transmission line as it runs past the Stockdill Substation, continuing to the Canberra Substation.

## Why?

- Increase availability of housing in the ACT, including affordable housing
- Conservation outcomes and visual amenity would be improved in the Ginninderry Conservation Corridor
- Removal of the lines near Ginninderry would improve local amenity by reducing visual impacts on residential areas

## Indicative Timeline



## Current engagement opportunities

- Drop-in sessions to provide feedback
- Provide feedback via QR code
- Provide comment on Environmental Approvals (~early 2025)
- Provide comment on Development Application (~early 2026)



Complete the feedback form and let us know what you think.