

# CARING FOR COUNTRY

Wilay Designs

Jazz and  
Kristal  
Matthews



# **We pay our respects**

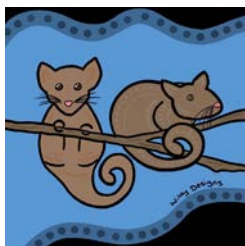
to Ngunawal peoples and First Nations peoples throughout Country today. With gratitude and humility we acknowledge Elders past and present. We thank them for all they do in continuing, strengthening and passing culture on.

## **Wilay Designs is a creative partnership between Jazz and Kristal - they're Ngunawal sisters and artists.**

"Our art exhibition, 'Caring for Country', explores the concept of taking care of the land, environment, and the animals that inhabit it.

This exhibition aims to remind visitors of their responsibility to care for Country and the importance of preserving it for future generations.

The paintings highlight the significance of the land and animals to our culture. Our hope is that visitors will leave the exhibition not only feeling inspired but with a renewed sense of respect and responsibility for Country and for us all to continue doing our part in looking after it."



For artwork sales and enquires  
contact Jazz and Kristal at:

**[wilaydesigns@gmail.com](mailto:wilaydesigns@gmail.com)**

**[www.wilaydesigns.com](http://www.wilaydesigns.com)**

# JAZZ MATTHEWS



## SCARRED TREE

Acrylic on framed canvas  
30x40cm.  
\$350

In the centre of this design shares a large, beautiful scarred tree found on Ngunawal Country. The bark on this tree was once removed to make a shield. Some scarred trees are also done for other uses such as to make canoes and gunggun (coolamon). Scarred trees are culturally significant and were/are only ever done with purpose.





## HILLS - NGUNAWAL COUNTRY

Acrylic on framed  
canvas 40X50cm.

\$450

Throughout the landscapes you see the stunning hills, mountains, Country tones, animal tracks and beautiful blue skies. It's important to look after Country and Country will look after you.

## LANDSCAPE

Acrylic on framed  
canvas 60x75cm.

\$800



This painting shares the beauty of the landscape, with the waterways, hills, land, animal tracks, plants and bush tucker. There is also a meeting place, symbolising the importance of coming together to take care of Country and all that is within the landscape.



## GROWTH

Acrylic on framed canvas  
25x30cm.

\$280

The purpose of this piece is to serve as a visual reminder that growth is a continuous process. Even when you feel like you're stuck, it's crucial to keep taking positive steps forward. Challenging yourself is essential for personal growth, both in terms of how you see yourself and how you interact with your surroundings/ lifestyle.

## BALLAD - NATIVE CHERRY

Acrylic on framed canvas  
20x20cm.

\$150



The surrounding water represents the water taken from the Balads host tree.



## JOURNEY ON COUNTRY

Acrylic on framed canvas  
40x50cm.

\$470

This piece shares waterways, hills, tracks, plants and people coming together. It represents the journey of respectfully and continuously listening, learning and taking positive action in caring for Country.

## LOOKING AFTER COUNTRY

Acrylic on framed canvas  
100x100cm.

\$2000



This painting depicts the landscapes, animals, waterways and also people coming together on Country. We all have the responsibility to look after the land we are on. To take care of Country by respecting cultural ways, animals and the waterways. If we look after Country, Country will look after us.





## DOWN BY THE WATER

Acrylic on framed canvas 50x60cm.

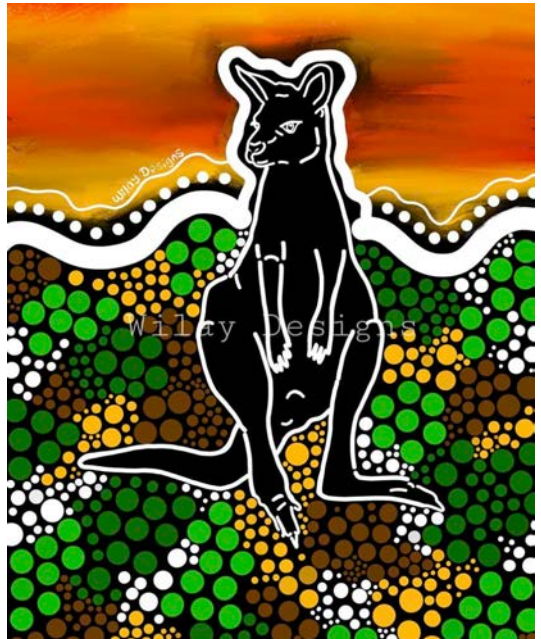
\$550

This painting represents a couple burgun (echidna) heading down to the water. The waterways are important for everything on Country.

## BURU - KANGAROO

A3 digital framed print.

\$200







## STRENGTH TOGETHER

A3 framed art print.

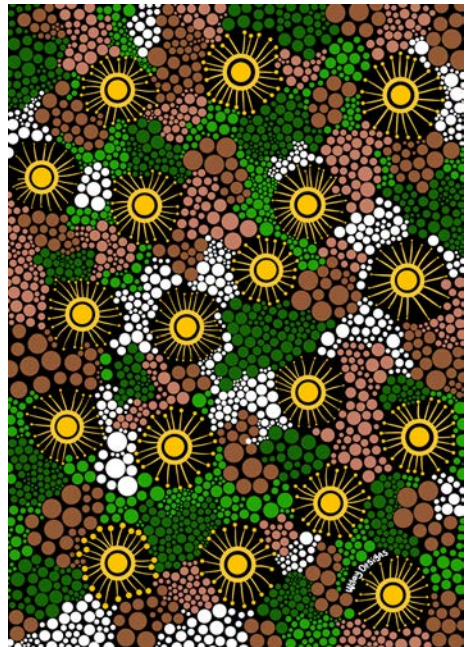
\$250

This artwork shares the importance of friendship and staying close to good, positive people who want you to win. Pictured are two eagles flying in the stunning sunset, showing individual strength and strength together.

## FIRST SPRING

Digital canvas print 40x60cm.

\$280



This piece is of the wattles on Country that come out during first spring.



## RADIANT ROSELLA

Digital canvas print  
30x45cm.

\$200

Walking through the woodlands with the blue skies and radiant rosellas watching down.

## LEARNING ON COUNTRY

Digital canvas print 40x60cm.

\$280



This piece shares the beautiful colours during spring. There is a meeting place to symbolise people coming together. It's about showing respect as we walk through and learn about Country, as passed down by our old people.



## COUNTRY BREEZE

Framed photography and digital art print A4.

\$130

## RISE ABOVE + MAJESTIC MURRUMBIDGEE

Framed drone photography and digital art print A2.

\$290



## RISE ABOVE

Framed photography and digital art print A3.

\$150





## POSITIVE GROWTH

Acrylic painted clock

30cm.

\$200

This artwork highlights the importance of taking positive steps towards growth. The sun represents empowerment and positive change, while the people groups meeting in the middle symbolise those whom we interact with and are surrounded by. The bottom symbols represent one's self making positive growth. The aim is to inspire viewers to keep pushing forward, even when they feel stuck. Encouraging a growth mindset, where we can learn, improve and develop. It also shares the importance of challenging oneself, understanding the impact of our surroundings and lifestyle on personal growth. It's time for change!

## CONNECTION

Acrylic on framed canvas 40x

50cm.

\$280



This artwork was done in collaboration with our younger brother Larryn. Larryn has shown the big beautiful trees on Country with mob beside it collecting bush tucker. This special piece represents all that Country is- the land, sky, mountains, waterways, people and culture.

# KRISTAL MATTHEWS



## SONNY THE TURTLE

Canvas print  
40x60cm.

\$300

Eastern long-necked turtles help maintain the balance in aquatic ecosystems, so it's important we look after them. In 2007 I painted a turtle and named him Sonny. I remember showing this painting to my Great Nan, Dorothy Carroll. Nan was surprised to hear the name Sonny, she then told me stories about her and her cousin Sonny. They grew up on an Aboriginal reserve together in Yass called Hollywood - which was a place my family were forced to live, on the outskirts of the town. It blew my mind that my painting of Sonny the turtle was able to spark all these stories of Nan growing up on Country. I did this design to pay homage to all the different stories I grew up listening too from Nan.



## COLOURS OF COUNTRY

Digital canvas print  
40x60cm.

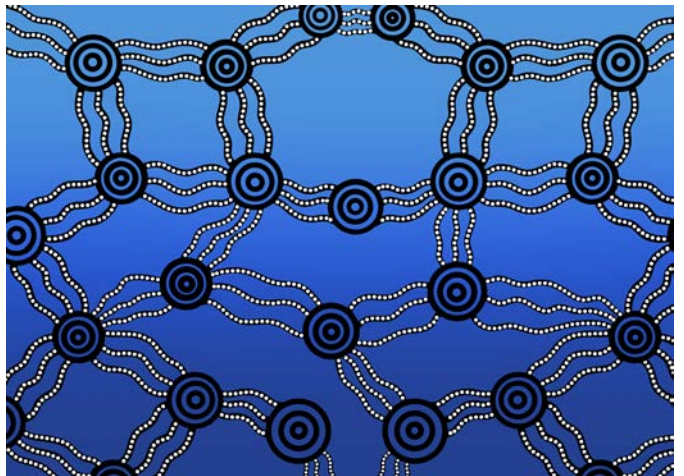
\$250

The colours of Country. Walk on Country. Let Country heal your mind and soul. Escape the chaos of everyday life and get lost within these colours. Let your mind unwind.

## WATERWAYS

Digital canvas  
print 30x45cm.

\$200



These rivers and lakes surrounding us hold cultural and historic importance deeply connected with traditions and stories. The serenity of the waterways brings a sense of calm, reflection and moments to unwind and connect with Country.





## SACRED LANDS

Digital canvas  
print 40x60cm.  
\$250

The land we all tread on is sacred, there are thousands of years of stories we are surrounded by. This is a visual reminder to tread lightly. The animals, waterways, land and sky have been cared for to be sustainable so we can thrive, we must do our best to care for it.

## MAJESTIC MURRUMBIDGEE

A3 Framed  
photography and  
digital art print.  
\$150



For a proper long time our old people have been coming to this area, hunting, sharing stories and caring for one another.



## AERIAL REFLECTIONS

Framed  
photography  
and digital art  
print 40x20cm.

\$140

Something that inspires me to continue to create is how our old people—my Great Nan, our Elders, ancestors, and those who came before us—weren't able to freely share culture. Despite the challenges they faced, their strength, courage, and resilience have ensured that we still have our culture today. This is an area our old people came too. There are symbols for meeting places, peoples, waterways and travelling lines all joined together to represent travelling with family.

## SUNSET OVER GINNINDERRY

A4 framed photography and art print.

\$130



This drone shot and art shares the calm moment of the setting sun casting a warm glow over Ginninderry.



## CARING FOR WATERWAYS

Acrylic on framed canvas  
50x60cm.

\$550

This is a visual representation of our waterways. It's important to look after the water and all that inhabits it, in turn this looks after us. Caring for Country is something Aboriginal and Torres Strait Islander peoples have been doing for thousands of years, it's vital to learn about the importance of this so we can continue to thrive for years ahead.

## LET COUNTRY GUIDE YOU

Acrylic and texture on framed canvas  
50x60cm.

\$550



Watch gum leaves sway in the winter breeze.  
The scent of fresh river air, reminding you Country cares.

Taste bush foods, flavours divine and rare.  
Listen closely to twigs crack, as you lie on your back.  
Feel the earth beneath you, its grounding impact.





## TRACKS OF CONNECTION

Acrylic and texture on framed canvas 50x60cm.

\$550

This painting depicts our Ngunawal Country. The circles are meeting places and people gathering around it, the lines in between are travel lines, this is people coming together and connecting. Respecting Country & working together. There are kangaroo tracks and this shows the animals travelling on Country.

## MOUNTAINS

Acrylic on framed canvas 30x40cm.

\$350



These mountains hold layers of cultural significance, representing the deep connection between the land and people.



## **WEAVED GUNGGUN**

Raffia 28cm.

\$180

This weaved piece is done in the shape of a gunggun (coolamon). It is a carrying vessel, used to carry bush tucker, water and even babies.

## **WEAVED EASTERN LONG- NECKED TURTLE**

Raffia 32cm.

\$300





*'Looking After Country'*

Wilay Designs is a creative partnership between Jazz and Kristal - they're Ngunawal sisters and artists.

**WILAYDESIGNS.COM**