



Communication Link

FINAL

Ginninderry Community Workshop – November 2023

Listening Report – FINAL DRAFT

November 2023

Introduction

The Ginninderry Community Workshop was held on Wednesday 1 November 2023. The workshop was promoted to residents via email and the Ginninderry Locals Facebook page. The workshop was the final one in a series of four community workshops outlined for 2023.

The key topic for this workshop was Master Planning in Ginninderry. This report provides a summary of the presentations and the feedback received at the workshop.

Workshop purpose

The workshop aimed to provide information about the master planning process at Ginninderry and gather feedback.

The purpose of the workshop was to:

- Provide information about Ginninderry's vision and its triple bottom line approach to development
- Provide information about the master planning process at Ginninderry and gather feedback.
- Provide an update on the Local Centre and gain feedback on concept design.
- Provide an update on proposals for the Future Urban Area and gather feedback on proposed options.
- Talk about the next stages for community engagement in Ginninderry

About the workshop

The community workshop is one of the activities detailed in Ginninderry's 12-Month Community Program, as shown below.

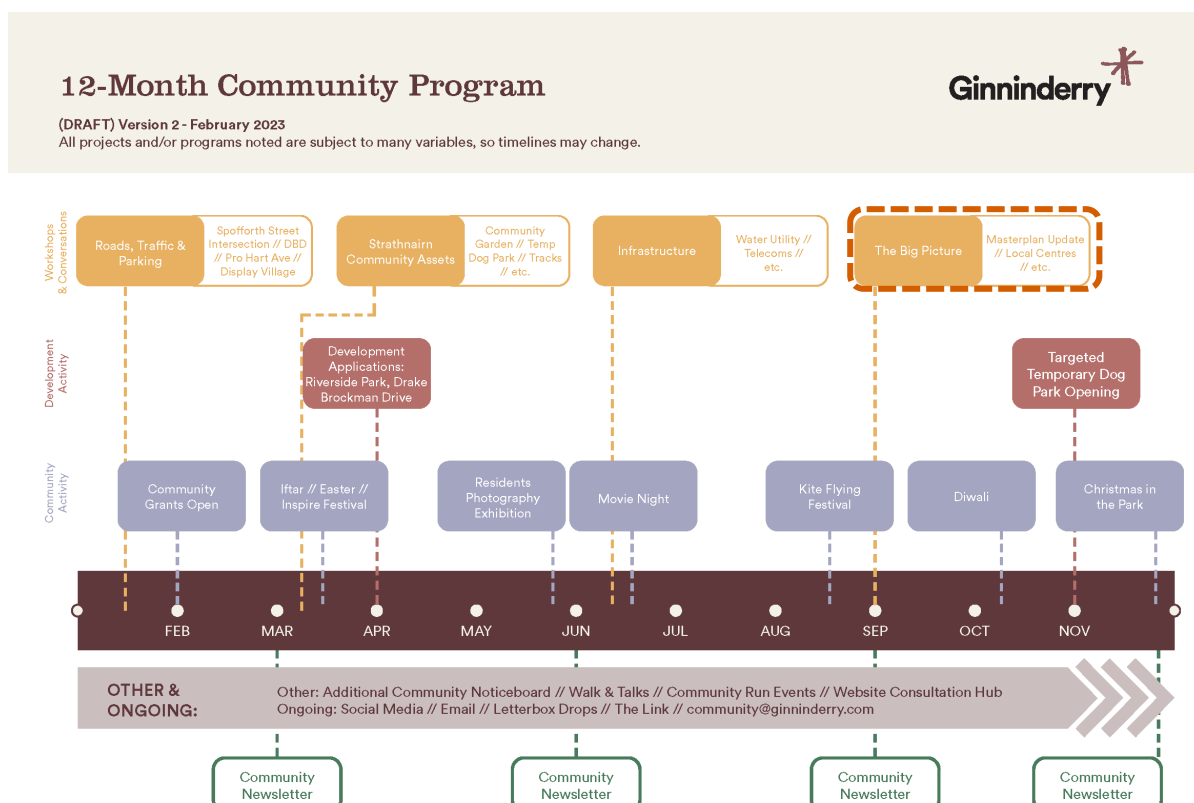




Figure 1. 12-Monthly Community Program.

The workshop was attended by 15 members of the local community. Representatives from SGS Economics, and Redbox Design also attended and presented at the workshop.

The event was facilitated by Helen Leayr from Communication Link.

The workshop included activities that enabled participants to share their thoughts and ideas in small groups as well as with all participants.

Ginninderry will use feedback from this workshop to guide continued engagement and communication with residents.



Images from the November 1 workshop.





What we heard

The workshop consisted of a series of activities and discussions to gather feedback from all participants. Feedback from each of these activities is outlined below.

Activity 1: Master planning

For this activity, participants were provided with presentation and background information about Master planning in Ginninderry. Participants were asked to provide feedback on **what needs more work** and **what's missing**.

Key themes and priorities

The following key themes and priorities for master planning emerged during the activity and group discussion:

- **Connection to nature and the outdoors**, including more walking tracks, lookout points, bike trails, playgrounds, BBQ facilities and increased trees and surrounding parks
- **Road infrastructure and parking**, with reassessment of roadside parking, dual main roads, clear speed limit signs, and improved access to shops and other infrastructure
- **Emergency services**, considering accessibility of the area for emergency vehicles due to narrow roads, and creating an emergency egress for bushfires
- **Hospitality venues**, including cafes, restaurants, clubs and pubs, with request to avoid McDonalds etc.
- **Community facilities**, with sporting and leisure facilities, tennis courts, a learn to ride facility and an early education centre
- **Public transport**, including covered bus stops, more bus routes to schools and light rail access

Table 1. Master planning

Topic	No. of mentions	Comments
Nature and outdoor facilities	13	<ul style="list-style-type: none">• Walking tracks and bike paths• BBQ areas• Parks and playgrounds• Nature play
Roads and parking	12	<ul style="list-style-type: none">• Wide/dual lane roads• More parking – on street/underground• Access points to Ginninderry
Public transport	6	<ul style="list-style-type: none">• More transport links• Space for shuttle bus to pull over• Covered bus stops• Light rail access
Other areas for development		<ul style="list-style-type: none">• Solar panels over parking areas• Community batteries





Subject Matter Experts discussion panel

As part of this community workshop, an expert panel was gathered to provide an opportunity for participants to discuss the key topics and seek feedback from subject matter experts.

The panel members were able to provide information about site constraints and special considerations for development and master planning.

The panel members were:

- Tom Jamison (Retail Development Specialist)
- Aliza Levy, SGS Economics (Community Needs Assessment)
- Karin Kemp, Redbox Design (Landscape Architects)

Key topics discussed

Local centre

Participants asked how the current location for the local centre had been selected. The panel advised that a large and growing catchment, central location and large roads were essential elements to ensure a local centre remains viable, and this is why this location was selected.

Participants questioned whether the local centre could actually be delivered as per the 'artist impressions' in the presentation, noting their desire for Ginninderry to deliver the local centre to uphold the quality represented. Ginninderry representatives provided advice that the process was quite detailed and included the sale of the site, the DA process and approvals. Participants noted that they would be keenly following the process.

Parking

Participants wanted to know if car parking was a consideration of master planning. The panel advised that typically parking is considered at the EDP (i.e. suburb subdivision design) level, but the principals of planning for precincts (e.g., a shopping centre) that included parking provisions would be included at the master planning stage.

Active travel principles

Participants asked how active travel in Ginninderry can be supported in the master planning stage. The panel advised that connectivity was an important consideration ensuring that development is well-connected with existing or planned public transportation networks.

Participants noted that having facilities such as local centre that was within walking distance aligned with Ginninderry's 6 star community aspirations and support the principals of active travel.

Community infrastructure needs

Participants asked how community infrastructure was planning for including things like schools or community facilities. The panel advised that community infrastructure requirements are a key consideration at the master plan level and community needs assessments can help to identify infrastructure gaps and requirements.





Activity 2: Your Local Centre

For this activity, participants were asked to consider the diverse needs of the current and future community in developing the local centre. There were provided with a set of personas that reflect the demographic mix of Canberra and think about **what's important to them** and **what type of facilities do they need**.

Key themes and priorities

The following key themes and priorities for the local centre emerged during the activity and group discussion:

- **Outdoor spaces for activity**, facilities and spaces that promote community connection and multigenerational involvement
- **Accessibility and safety**, ensuring ease of access for community members of all abilities and safety to enjoy public spaces
- **Food and hospitality venues**, locations that provide places for the community to eat and socialise
- **Health centre**, providing a health hub that serves the varying ages and needs of the community
- **Community centre spaces**, multipurpose spaces to access IT equipment, remote workspaces, or creative recreation
- **Community involvement**, opportunities to volunteer to support the community and events

Table 2. Local Centre

Topic	No. of mentions	Comments
Outdoor activity spaces	12	<ul style="list-style-type: none">• Shaded outdoor areas• Bike facilities• Sports fields• Adventure playground
Community centre	9	<ul style="list-style-type: none">• Arts and craft space• Community space• IT access/public Wi-fi• Library
Food and hospitality	8	<ul style="list-style-type: none">• Café/Pub/Club/Food trucks• Alfresco dining• Supermarket/bakery
Other priorities		<ul style="list-style-type: none">• Culture• Safe spaces• Schools





Future Urban Area presentation and discussion

A presentation was delivered by SGS Economics on options for the Future Urban Area site adjacent the proposed school site in Ginninderry. The options were based on Ginninderry's 2017 Community Needs Assessment and identified community infrastructure requirements across Ginninderry.

These included:

- Community centre (located near or as part of the market centre)
- 1-2 neighbourhood halls
- Up to 6 meeting rooms for community use
- Library through increased opening hours and resources allocated to the Kippax Library
- Youth services
- Indoor sports centre
- 25m swimming pool
- Medical services
- Residential aged care facility

A list of possible community facilities were provided based on locational suitability, which considers what is most suitable facility on the site based on current offering.

The panel answered questions participants had about the Future Urban Area presentation and some of the options presented.

Key topics discussed

Participants questioned whether the site was suitable for a pool noting the particular geography of the site. The panel advised the needs assessment is just a very early stage of exploring options and does take into account economic viability. There still needs to be work done to explore and understand site constraints.

Participants noted the need for a community facility. The panel advised that these can often be co-located with other facilities and noted the adjacent school site which could provide facilities for the broader community such as function centres, theatres or common spaces.

The panel noted that while facilities such as a sports centre or swimming pool had been identified as suitable for the location, there would still need to be considerable site analysis to determine whether these options were feasible. This would include traffic and utility assessments, and environmental impact assessments.





Conclusion and next steps

At the end of the workshop, Ginninderry representatives committed to considering and engaging with the residents on the following:

- Future consultation on the development of the Local Centre
- Future consultation on the Future Urban Area site
- Ongoing engagement with the Ginninderry Community in 2024

Participants were encouraged to visit the Ginninderry website to learn more about community events at Ginninderry.com/WhatsOn.

This summary is supported by a photographic record of feedback posters and a written record of feedback provided on worksheets and post-it notes included in Appendix A.





Appendix A – Workshop worksheets

Reviewing the master plan:

Activity 1: Reviewing the master plan

What needs more work?

What's missing?

What should be included in the master plan?

Activity 1: Reviewing the master plan

What needs more work?

What's missing?

What should be included in the master plan?

Activity 1: Reviewing the master plan

What needs more work?

What's missing?

What should be included in the master plan?

Activity 1: Reviewing the master plan

What needs more work?

What's missing?

What should be included in the master plan?

Your Local Centre:

Activity 2: Your Local Centre MIA & CELIA

What's important to them?

What type of facilities do they need?

What would your persona want from their local centre?

Activity 2: Your Local Centre Ray & Ron

What's important to them?

What type of facilities do they need?

What would your persona want from their local centre?

Activity 2: Your Local Centre BEN & MIA

What's important to them?

What type of facilities do they need?

What would your persona want from their local centre?

Activity 2: Your Local Centre SHANE & RON

What's important to them?

What type of facilities do they need?

What would your persona want from their local centre?

