



Communication Link

FINAL

Ginninderry Community Workshop – March 2023

Listening Report

22 March 2023

DRAFT

Introduction

This report provides a summary of the feedback received in the Ginninderry Community Workshop held on 15 March 2023.

The Ginninderry Community Workshop was held on Wednesday, 15 March 2023. The workshop was promoted to residents via email and the Ginninderry Locals Facebook page. The workshop was the third workshop from a series of four community workshops scheduled for 2023.

This report provides a summary of the feedback received in the Ginninderry Community Workshop held on 15 March 2023.

Workshop purpose

The workshop focused on listening to the community on their aspirations and views on a community garden and a dog park in Ginninderry:

The purpose of the workshops was to:

- Gather insights from residents about their aspirations for community assets in Ginninderry
- Provide information about the future of some community assets
- Support the development of positive communication and collaboration between Ginninderry and its residents.

About the workshop

The community workshop is one of the activities detailed in Ginninderry's 12-Month Community Program, as shown below.

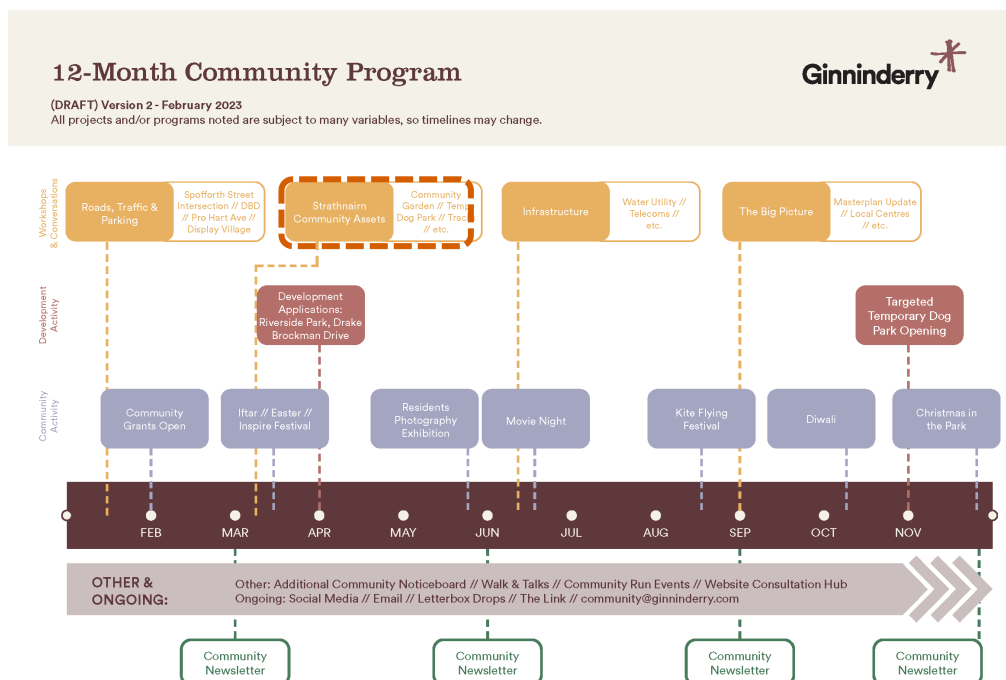


Figure 1. 12-Monthly Community Program.



There were 27 registrations for the workshop, which was attended by 16 members of the local community. Canberra Organic Growers Society (COGS) members also attended and presented at the workshop.

The event was facilitated by Helen Leayr from Communication Link.

The workshop included activities that enabled participants to share their thoughts and ideas in small groups as well as with all participants.

Ginninderry will use feedback from this workshop to guide continued engagement and communication with residents.

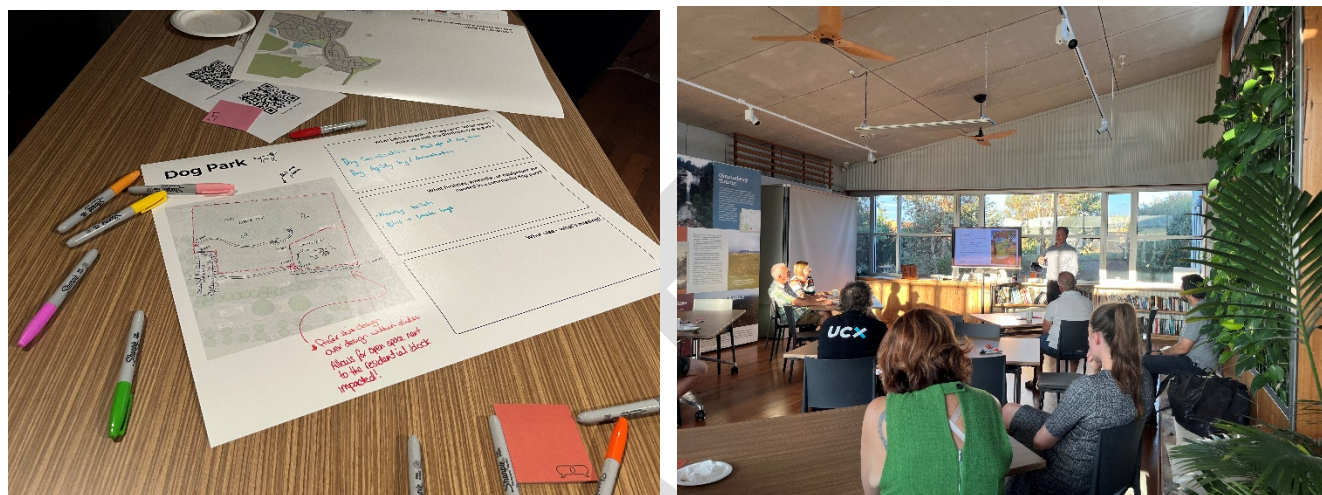


Figure 2. Images from the Community Assets workshop.





Ginninderry development update

A series of presentations were given to participants, providing an overview of the following topics:

- Proposed School Site EDP
- Display Village Closure & Inspire Festival
- Hilltop & Nature Play Park
- Strathnairn Charity House
- Wayfinding Signage

The presentations outlined the future plans for these Ginninderry developments and associated events.



Figure 3. Presentation slides summarising Ginninderry development updates.

Conservation Trust Management Plan.

A presentation was also provided on the Conservation Trust Management Plan. Participants were invited to find out more and comment on the plan at the following link

<https://trc.mysocialpinpoint.com.au/ginninderry-plan-of-management-review>





What we heard

The workshop consisted of a series of activities and discussions to gather feedback from all participants. Feedback from each of these activities is outlined below.

How community assets are being used

As an icebreaker activity, participants were asked questions using the online poll tool Slido to indicate how they might use community assets in Ginninderry.

What are my favourite things?

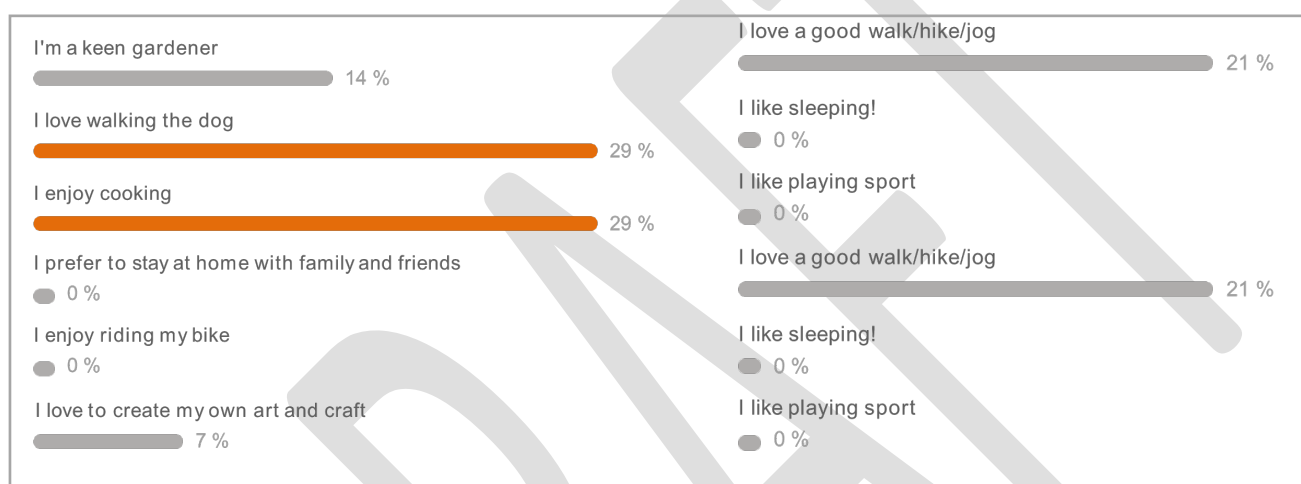


Figure 4. Participant responses on their favourite things to do in Ginninderry.

Name a community asset that you use in Ginninderry



Figure 5. Participant responses on common community assets used Ginninderry.





Activity 1: Temporary Dog park

For this activity, participants were provided with an illustration of the proposed design and layout of the dog park in the Ginninderry area and asked to respond to the following guiding questions.

- What brings people to a dog park? What would make you visit the Ginninderry dog park?
- What facilities, amenities or equipment are needed in a community dog park
- What else – what's missing?

Key themes and priorities

The following key themes and priorities for the dog park emerged during the activity and group discussion:

- **Community building**, including meeting others in the community and dog socialisation
- **Exercise** including dog agility, events and activities for dogs
- **Community amenities** such as drinking fountains, toilets and shade, lighting
- **Waste bins**, including poo bags
- **Noticeboard** to advertise and promote dog park events
- **Coffee cart** for dog park visitors.

Participants noted the following 'missing pieces' could be to be considered in developing the future dog park:

- **A dog 'friends' network** – to connect with others using the park and establish scheduled events
- **An area for medium sized dogs** – growing large dog puppies and smaller active dogs
- **Allow for open space next to impacted residential blocks** – ensure adjacent properties aren't negatively impacted.

Table 1 summarises the feedback from this exercise. Completed worksheets have been included in *Appendix A*.

Table 1. Dog park

Topic	No. of mentions	Comments
Social events and community building for the dogs and owners	7	<ul style="list-style-type: none">• Social development, exercise, agility, events and activities for dogs• Dog club and meeting like-minded people
Park design, size and equipment	6	<ul style="list-style-type: none">• Build a structure for dog agility and enrichment activities• Size of dog park for all dog sizes
Community amenities such as water fountains, toilets, waste bins, shade, notice board	5	<ul style="list-style-type: none">• Convenience in disposing of waste• Access to toilets• Provide shade
Community services - coffee van	3	<ul style="list-style-type: none">• Provide an additional service





Activity 2: Community garden worksheet activity

For this activity, participants were provided with an illustration of the proposed design and layout of the dog park in the Ginninderry area and asked to respond to the following guiding questions:

- What skills, abilities and solutions are needed to establish a community garden?
- What facilities, amenities or equipment is needed in a community garden?
- What else – what's missing?

Key themes and priorities

The following key themes and priorities emerged during the activity and group discussion:

- **Ensure there are interested volunteers**, including those with previous experience and / or basic gardening knowledge
- **Cooperation/coordination** on what to plant and grow
- **Garden infrastructure**, including water tanks, greenhouses, and irrigation
- **Gardening resources**, including gardening tools, compost and pest control
- **Establish connections** with other groups to help establish the garden
- **Basic site amenities** such as toilets, lighting and shade.

Table 2 summarises the worksheet feedback from this exercise. Completed worksheets have been included in *Appendix A*.

Table 2. Community Garden

Topic	No. of mentions	Comments
Garden tools, compost	7	<ul style="list-style-type: none">• Irrigation, greenhouse, compost, compost bin
Skills and abilities, volunteers	4	<ul style="list-style-type: none">• Connect with organisations, volunteers and government<ul style="list-style-type: none">– E.g., Stephanie Alexander's program for kids
Crops	2	<ul style="list-style-type: none">• Source crops/plantings from cooperation• Government support
Other community amenities	1	<ul style="list-style-type: none">• Toilets





Activity 3: Other community assets & missing pieces worksheet activity

Participants were asked to discuss and provide feedback and ideas on what other community assets need to be considered or planned for in Ginninderry.

Key themes and priorities

The following key themes and priorities emerged during the activity and group discussion:

- **Wayfinding and signage** as there is currently no signage to welcome or signify an entrance to Strathnairn
- **Park and public space maintenance and safety**, including long grasses, irrigation, additional lighting, and security cameras in parts of Strathnairn
- **Ginninderry bus connections**, including exploring opportunities for direct bus connections to Belconnen Westfields and Woden which could potentially start with weekend services
- **Community facilities** such as sports and aquatic centres, recycling facilities and barbecue and toilets
- **Connection to Belconnen via Blue bus**
- **Community amenities** such as barbecues, toilets and waste bins

Table 3 summarises the worksheet feedback from this exercise. Completed worksheets have been included in *Appendix A*.

Table 3. Other community assets

Topic	No. of mentions	Comments
Park maintenance and safety	8	<ul style="list-style-type: none">• Visible sign to the suburb• Long grass and irrigation• Traffic lights camera• Lighting in the park
Community facilities	5	<ul style="list-style-type: none">• Sports and aquatic centres• Recycling facilities• Connection to Belconnen via Blue bus
Community amenities	4	<ul style="list-style-type: none">• Barbecues and toilets• Waste bins
Traffic and roads assets		<ul style="list-style-type: none">• No speed humps on Pro Hart Ave• No commercial parking, food truck and 3 x semi trailers - Lionel Rose• Install red light cameras





Key themes

Following is a summary of the key themes, concerns, and suggestions relating to Ginninderry community assets raised during the workshop and group discussions.

Temporary dog park

Residential impact

- The design needs to consider the impact on nearby and adjacent residents.
- It was suggested that the design should allow for open space next to impacted residential blocks.

Dog park design

- It was noted that the equipment and structure in the dog park must suit all types of dogs and dogs of all ages.
- Thought needs to be given to the right type of landscaping and grass to be included in the park that can withstand regular use by dogs, as well as proper drainage to avoid it becoming muddy and bogged.
- Community amenities such as water fountains, toilets, waste bins, shade, a notice board and a regular service of a coffee van were additional suggestions given by participants as things to be considered as inclusions for the dog park.

Community building opportunities

- Social events and a community building for the dogs and owners were of great interest to this group and to ensure that all types of dogs, regardless of their sizes, got their exercise. There was interest in agility training, tryouts and demonstration.

Community Garden

Community involvement and volunteers

- The success of the garden will be reliant on the number of volunteers and participants. This could include connecting with ACT Education to get the new school involved.
- Some participants provided their contact details as future volunteers.
- COGS noted that they had waiting lists for other Canberra community gardens and suggested that these people could be included in the Ginninderry Community Garden to ensure adequate start-up/establishment numbers.

Infrastructure and resources

- It was noted that basic things to consider for a community garden include garden tools, compost and compost bins, irrigation, a greenhouse, people with basic gardening skills and people who are interested in getting involved or volunteers.
- The feedback also suggested that Ginninderry seek assistance from the government and gardening programs to support crops and compost.

Missing pieces – other community assets to consider

Strathnairn suburb signage

- It was noted there is currently no Strathnairn suburb signage. Ginninderry acknowledged that this was an oversight in the suburb's development and acknowledged that it could take at least 12 months to design, source and install.





- Residents asked if Ginninderry could consider temporary options.
- Concerns were also raised about the lack of knowledge of where Strathnairn is located on third-party platforms and websites such as Coles delivery and Google maps.
- Ginninderry representatives noted that requests for updates or corrections could be lodged with Google Maps.

Illegal/antisocial behaviour/vandalism in parks and public areas

- Concerns were raised about some anti-social behaviour occurring in public places and parks (Paddy's Park ponds and Icon water assets). It was suggested that additional lighting could be installed to deter gatherings and anti-social behaviour.
- Ginninderry representatives noted there were 27 security cameras within the suburb at present.
- It was also suggested that ACT policing be notified to see if regular patrols could act as additional deterrents.
- It was suggested that other creative solutions could be investigated, such as the substation art program undertaken in Civic using urban artists (graffiti art).
- It was suggested using social media i.e. local residents groups to inform of any strange behaviour.

Ginninderry bus service

- It was suggested that Ginninderry could explore options to establish direct bus connections to Belconnen and Woden. Could potentially start with weekend services.
- It was suggested that this would be of benefit to youth and teens in Ginninderry.
- Ginninderry representatives noted the request and committed to looking at options with Transport Canberra and City Services.

Display Village Closure

- It was suggested that temporary signage could be installed to notify visitors and residents of the upcoming change to traffic flow at the intersection.
- Ginninderry representatives noted there would share public information about the closure and its impact on traffic via newsletters and social media. They would also consider letterbox dropping.

Activities for children and youth in Ginninderry

- It was suggested that the community needs to explore activities and future assets that will engage the growing youth population in Ginninderry.
- It was noted that there is currently a weekend rangers program for younger children and plans for school holiday programs.
- Ginninderry bus connections to major Canberra centres were suggested as a way to help youth in Ginninderry to travel with more safety and be more independent.





Conclusion and next steps

At the end of the workshop, Ginninderry representatives committed to considering and engaging with the residents on the following:

- Future consultation on the final design of the Temporary Dog Park.
- Future consultation on the final design and management arrangements for the Community Garden.
- Signage options for Strathnairn.
- Community communication advising of the Display Village closure and roads re-opening.

Participants were also encouraged to visit the Ginninderry website to learn more about community events at [Ginninderry.com/WhatsOn](https://ginninderry.com/WhatsOn).

This summary is supported by a photographic record of feedback posters and a written record of feedback provided on worksheets and post-it notes included in Appendix A.

The next community workshop will focus on **Infrastructure** in Ginninderry.

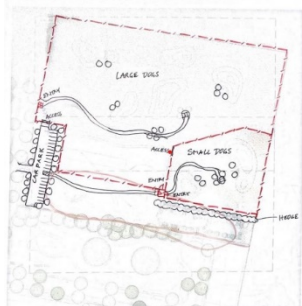




Appendix A – Workshop worksheets

Temporary Dog park worksheets

Dog Park



What brings people to a dog park? What would make you visit the Ginninderry dog park?

- Dog exercise and social development.
- Meet like minded people - builds community

What facilities, amenities or equipment are needed in a community dog park?

- Water fountains - both human and dogs.
- Bin/poo bags
- Shade - natural and man built
- Notice board - a place to advertise/promote etc

What else - what's missing?

- Scheduled events is Puppy day out with a coffee van etc
- Weekly coffee van on a Sunday perhaps?
- Larger small dog area
- Medium size dog area. Thought behind this... growing large dog puppies, the intermediate dog.
- Network with 'Bark Friends' or other organisations to support events.

Dog Park



What brings people to a dog park? What would make you visit the Ginninderry dog park?

Dog Socialisation → Meet up of dog clubs
Dog Agility try / demonstration
Dog Agility Structures
Coffee Van

What facilities, amenities or equipment are needed in a community dog park?

- Nearby toilets
- Bins + Waste bags
- Enrichment Structures

What else - what's missing?

* Lights
* Prefer this design over design without shade. Allow for open space next to the residential block impacted.

Community garden worksheets

Community Garden



What skills, abilities and solutions are needed to establish a community garden?

Most interested people would have at least basics.

What facilities, amenities or equipment are needed in a community garden?

Irrigation? Composter (rocket composter can be funded by council) Shade. Garden shed. Garden tools Compost bins

What else - what's missing?

- Link/connect with the upcoming school Reserve plots and invest time in promoting. It will be vital to communicate w ACT Education. N Stephanie Alexander program.



Volunteer: Sheikh

Community Garden



What skills, abilities and solutions are needed to establish a community garden?

- Volunteers
- Cooperation on crops

What facilities, amenities or equipment are needed in a community garden?

- Rainwater tank
- Compost
- Pest control/deterrent
- Greenhouse

What else - what's missing?

- Toilet
Hayley Oldfield - 0432687100
- Potential Volunteer



Missing pieces worksheets

Missing pieces



Bus network → Belco

What other community assets do we need to consider?

A large, highly visible STRATHGIRN sign at entry to suburb.

Cameras in Paddy's Park - for late night travellers, lights

Real light camera

Compost bins in organic garden

Bins in all parks.

Comments on native grasses - maintenance

Don't overwater Paddy's Park.

Don't water → offer rain - why? It is described as a drought.

Tall trees in parks/on verges/in roads around the pond in Paddy's Park & under bridge

Blue bus - Every second route convert to Belconnen run.

X Speed humps → Robert Ave

Tipoff Base

X Commercial parking → food truck → 3x semi trailers

Missing pieces



What other community assets do we need to consider?

- BBQ's + toilets @ Wattle Park (all parks) + bins
- Aquatic centre
- Cardboard recycling Collection
- Sports fields + tennis courts
- Library

