



Block m Section BJ

from \$1,105,900



4 BED



2 BATH



2 CAR



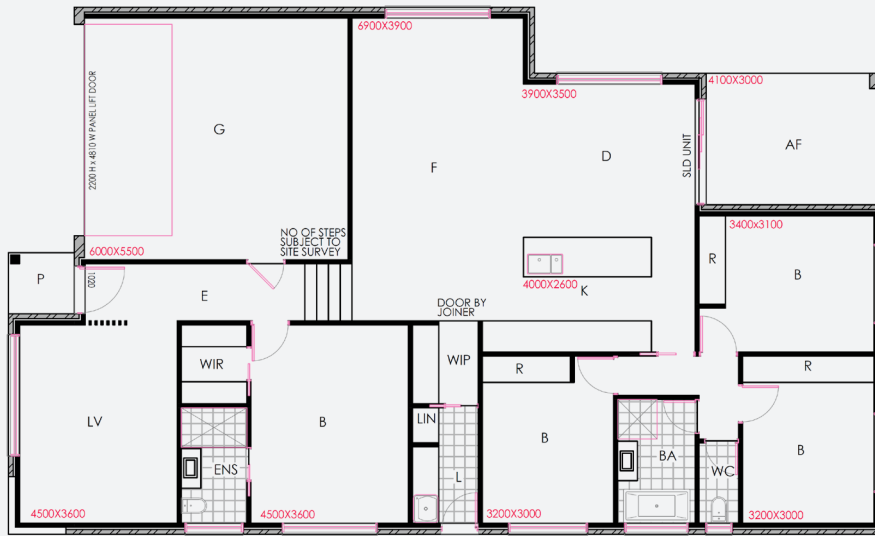
7 EER

TOTAL HOUSE SIZE: 220m² | Living space: 170m² | Garage: 36m² | Alfresco: 12m² | Porch: 2m²

At SM Precision, we have a personalized approach to each and every project, seeing our builds through from concept to completion. Designed to be functional and improve the way you live, this 4-Bedroom modern split-level home offers the behind-the-scenes items that make living in this environment so comfortable. Double glazed windows are a must, not only for their thermal value but for the restriction of external noise. Solar power has also been provided, coupled with the use of electric heat pumps for hot water usage throughout our homes. Combined with energy-efficient heating and cooling, water-efficient fixtures and a rainwater tank, these elements provide a 7-star energy-efficient home, everything a Canberra family could ask for. We advise on how to use interior detail as a foundation throughout your home to achieve a look of natural elegance including, timber features, designer finishes, kitchen integration and window furnishings. All our packages include a full scope of internal design and finishes with upgrades available upon request.

Quality Features + Inclusions

- Builders Colour Selection boards pre-approved.
- Double Glazed Windows and Sliding Doors
- Inverter Reverse Cycle Ducted Heating & Cooling System
- Custom Joinery Designed with Stone Benchtops
- Appliance Package including Dishwasher
- NBN Connection Provisions
- Slimline Water Tank with Integrated Pump
- 300L Heat Pump Hot Water System
- 4kw Solar Array System
- Package Upgrades Available



Block size: 420m² | Block dimensions: 15m x 28m

smprecision.com.au