



Block ag Section AG

from \$1,138,950



4 BED



2 BATH



2 CAR



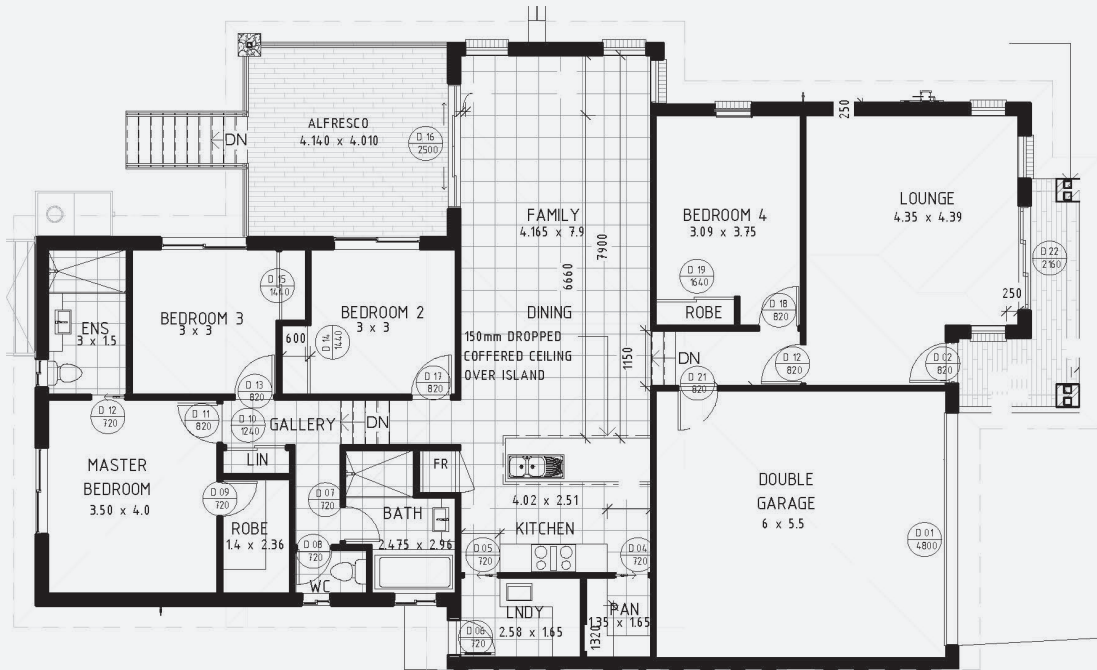
7 EER

TOTAL HOUSE SIZE: 224m² | Living space: 163m² | Garage: 37m² | Alfresco: 17m² | Porch: 7m²

The Cardinia offers 4 bedrooms with two separate living areas. With a great sized ensuite and WIR the master bedroom is very spacious. Including a WIP, practical laundry, built in robes to all bedrooms and easy access to outdoor living. Lastly the Cardinia with its open plan living and generous alfresco provides a great opportunity for entertainment, or to enjoy all to yourself.

Quality Features + Inclusions

- 600mm SMEG appliances in kitchen (induction cooktop with electric oven) and dishwasher
- 20mm Stone benchtops to Kitchen
- Custom vanities with 20mm stone benchtops
- Full height tiles to bathroom & ensuite
- DLUG (double lock up garage) with remote controls and internal access
- Reverse Cycle heating & cooling
- Colorbond Roof
- Water tank with pump
- Carpet to lounge room and bedrooms with 12mm Laminate Flooring to entry, family, meals, kitchen and hallway
- Double glazed windows with Aluminium frames (windows and sliding doors with flyscreens)



Block size: 478m² | Block dimensions: 18m x 28m

Contact Ideal Building Solutions
Michele Elword
info@idealbuildingsolutions.com.au
0427 007 223

idealbuildingsolutions.com.au