



Block z Section BH

from \$1,095,150



4 BED



2 BATH



2 CAR



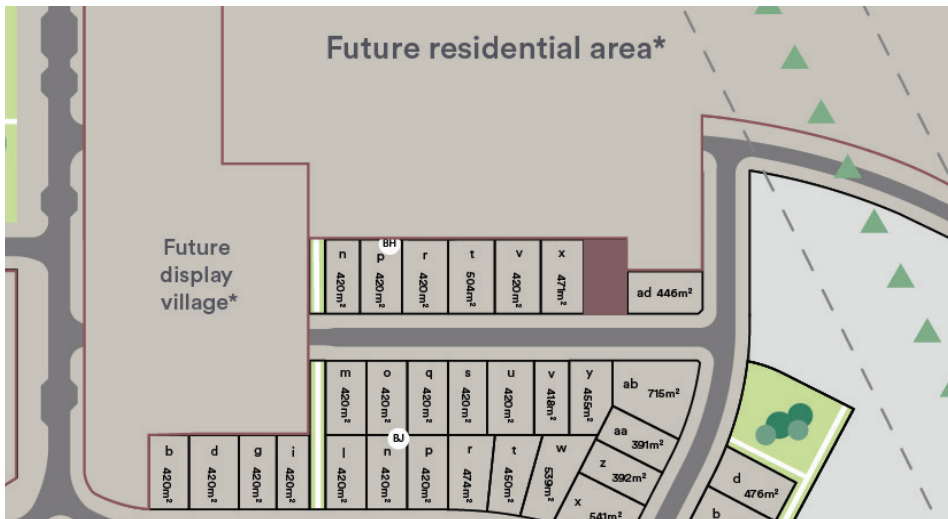
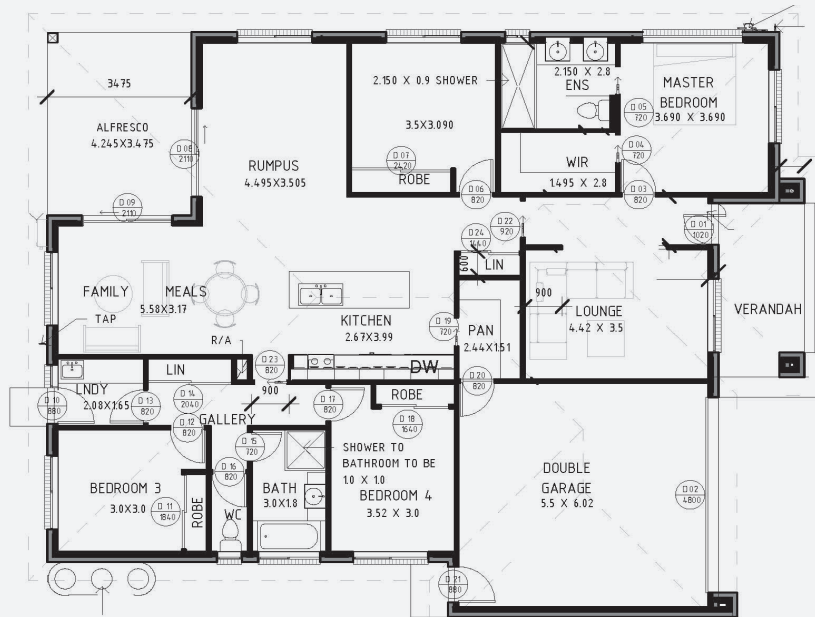
7 EER

TOTAL HOUSE SIZE: 234m² | Living space: 172m² | Garage: 37m² | Alfresco: 16m² | Porch: 9m²

This architecturally designed 4-bedroom family home has been created specifically with functionality and practicality in mind. All bedrooms have built in robes with a WIR and ensuite to the master bedroom. Offering 2 living areas with segregation enables the ability to conduct several activities at any one time without impact on each other as well as providing the opportunity for a formal as well as less formal environment within one home. A great WIP with garage access, offers convenient access for groceries, great open living area off the kitchen & alfresco perfect for entertaining. The Kensington is efficient on space with great street appeal.

Quality Features + Inclusions

- 600mm SMEG appliances in kitchen (induction cooktop with electric oven) and dishwasher
- 20mm Stone benchtops to Kitchen
- Custom vanities with 20mm stone benchtops
- Full height tiles to bathroom & ensuite
- DLUG (double lock up garage) with remote controls and internal access
- Reverse Cycle heating & cooling
- Colorbond Roof
- Water tank with pump
- Carpet to lounge room and bedrooms with 12mm Laminate Flooring to entry, family, meals, kitchen and hallway
- Double glazed windows with Aluminium frames (windows and sliding doors with flyscreens)



Block size: 504m² | Block dimensions: 28m x 18m

Contact Ideal Building Solutions
Michele Elword
info@idealbuildingsolutions.com.au
0427 007 223

idealbuildingsolutions.com.au