



Block k Section AE

from \$1,195,905



4 BED



2 BATH



2 CAR



7 EER

TOTAL HOUSE SIZE: 262m² | Living space: 202m² | Garage: 39m² | Alfresco: 15m² | Porch: 5m²

Set on a 504sqm Block, The Vista combines elegant spatial flow and intelligent separation of private spaces. The Vista design has all the features to meet modern family requirements with space for every member of the family.

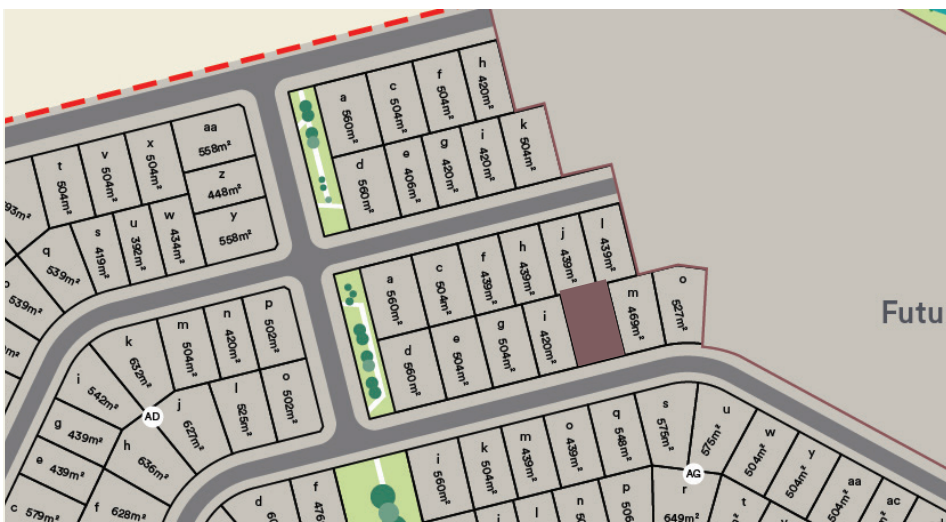
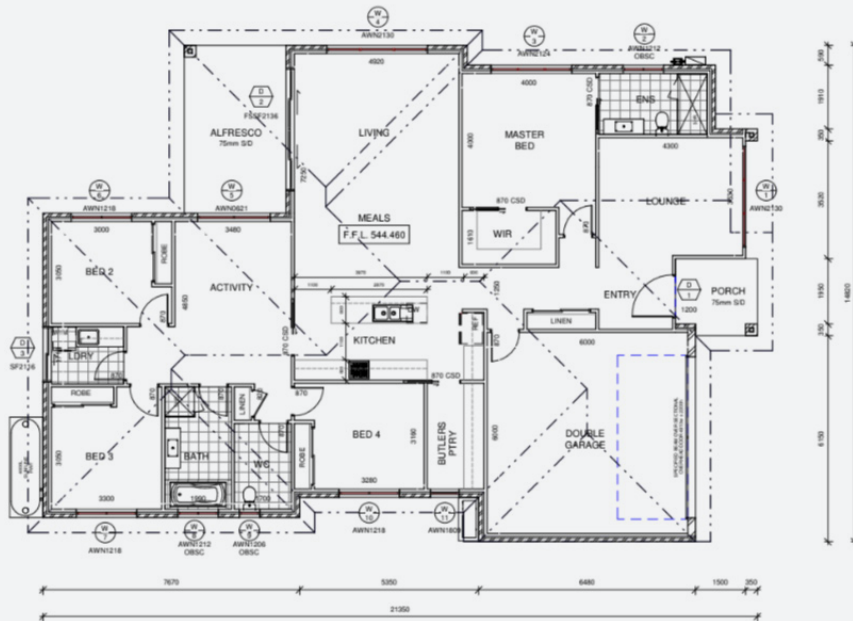
At the heart of the home is the perfect space for the family to come together and entertain guests, boasting an impressive open plan living area with kitchen, Dining and Family that opens outdoors onto a large covered Alfresco.

Towards the rear of the home is the kids' zone with bedrooms and family bathroom surrounding a central activity room. A master bedroom suite is privately positioned behind a separate lounge room to the front and is complemented by a well-appointed ensuite and walk in robe.

Providing separate spaces to retreat, relax or play the Vista design, exclusive to G.J. Gardner Homes brings you closer to the lifestyle you've always wanted; in the home you deserve!

Quality Features + Inclusions

- Upgraded ceiling height to 2700m
- Includes drop edge beams down the garage side of the house.
- Windows and glass sliding doors upgraded to double glazed
- Upgraded hot water system Stieble Eltron 302 litre heat pump with smart element.
- Allowance for supply & install solar PV
- Ceiling insulation upgraded to R5.0
- Ceramic tiles to entry, pantry, kitchen, meals, living and activity areas
- Upgraded robes in bedrooms 2, 3 and 4 with sliding doors
- Smeg 600mm induction cooktop.
- Fully ducted reverse cycle air conditioning with two zones



Block size: 504m² | Block dimensions: 18m x 28m

Contact GJ Gardner Homes
Peter Natterer
peter.natterer@gjgardner.com.au
0411 641 420

gjgardner.com.au