



Arts Trail Catalogue

GX Display Village

GX Arts Trail Catalogue

Ginninderry has worked closely with the local arts community over recent years and identified an opportunity to use Ginninderry's unique offering as a platform for showcasing work by local artists.

The GX Arts Trail Catalogue features more than 100 original pieces
- paintings, sculptures, ceramics, glassworks and prints.

**To appreciate the complete Ginninderry experience,
download the GX App**



**If you are interested in purchasing a piece of artwork,
please contact:**

Tom Gray
Arts & Cultural Planning Advisor
tom@ginninderry.com

Contents

The Link at Ginninderry	5	McDonald Jones: Cullen	49
Bode (RAM): Modhaus 2.0	7	Rawson Homes: Grace	53
APA: The Adelong	12	Rawson Homes: Newlyn	57
Ideal Building Solutions: The Ainslie	19	SM Precision: The Alpine	60
Gracious Living Construction: Avoca 265	25	Sienna: The Banksia	66
Achieve Homes: Vivid	30	G.J Gardner Homes: The Long Island	70
EDC: Onyx	38	Ginninderry Flexi-Living: Profile	74
Rojas Constructions: In Summer	42	Coming Soon	78
McDonald Jones: Admiral	45		

Locations

1. Bode (RAM) Modhaus 2.0
2. APA: The Adelong
3. Ideal Building Solutions: The Ainslie
4. Gracious Living Construction: Avoca 265
5. Achieve Homes: Vivid
6. EDC: Onyx
7. Rojas Constructions: In Summer
8. McDonald Jones: Admiral
9. McDonald Jones: Cullen
10. Rawson Homes: Grace 25
11. Rawson Homes: Newlyn 31
12. SM Precision: The Alpine
13. Sienna: The Banksia
14. G.J Gardner Homes: The Long Island
15. Ginninderry Flexi-Living: Profile
16. The Link



The Link Ginninderry



Jenny Blake

Canberra Grass Fires

\$3600

Acrylic on stretch canvas

Size: 180cm x 160cm

“My work is driven by one of the most pressing issues of our times, the fragility and strength of people and nature. I use a diverse range of materials and mediums to make abstract works of art. I seek sustainable materials and discarded items to work with. By telling these stories I hope to shed light on the beauty, the pain and resilience of our communities and the land we inhabit.

This work has captured the eerie dark skies over Canberra, bellowing clouds and unbreathable smoky air. This strange beauty, the terror, the unimaginable damage was followed by months of collective sadness. After the fires, when all is calm, sharp fearful memories can be sparked by the slightest whiff of a minor grass fire.”

View this artwork at:

The Link

1 McClymont Way, Strathnairn



GX ART TRAIL @ GINNINDERRY



Bode (RAM) Modhaus 2.0



On display @ Modhaus 2.0



Valentyna Crane
**Some days it's best to
take a seat for a while**

No longer on display



Hayley Lander
Unburdened



Avi Amesbury
**Rare Earth, Light
and Land II**

No longer on display

Valentyna Crane

Some days it's best to take a seat for a while

\$2150

Acrylic on canvas
Size: 102cm x 102cm

"Sometimes it's best to just take a seat for a while" is from the project "Impressions of Canberra," an exhibition of paintings that capture the changing seasons. The bench here is in Bowen Park with the autumn view across Lake Burley Griffin to the National Carillon.

This artwork is no longer on display



Hayley Lander

Unburdened

POA

Painting | Oil on board

Size: 118cm x 122cm

Unburdened is an excellent example of the gentle beauty the artist imparts into her work. Her theme is concerned with the delicate balance between man and nature and the impact of that on our contemporary environment. Lander is a skilled technician and uses paint with particular dexterity. The pictorial elements are beautifully delineated, but her thematic impulse is always at the forefront of her work.

View this artwork at:

Modhaus 2.0 – Bode by Ram Constructions
32 Yeomans Street, Strathnairn



Avi Amesbury

Rare Earth, Light and Land II

\$620

Ceramic | Porcelain, volcanic ash and clay
Size: 55cm x 14cm x 14cm

Rare Earth Series, Light and Land II is an elegant pair of cylindrical forms decorated with essentially abstract symbols that reference the Australian landscape. The forms of each are wrapped around the internal space such that there is delicate physical lightness infused into each. This also gives a luminosity to each of the vessels again referencing the landscape but here specifically the light that nurtures the Australian bush.

This artwork is no longer on display



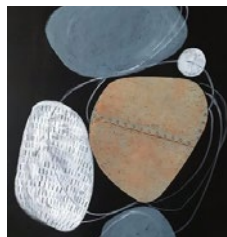
APA The Adelong



On display @ The Adelong



Paul Summerfield
Earth Stories



Jenny Blake
Happy Shapes



Jennifer Kemarre Martiniello
Coil Basket D#1



Canberra Glassworks
The Geo Series – Teal



Avi Amesbury
**Rare Earth, Light
and Land I**

No longer on display

Paul Summerfield

Earth Stories

Unframed: \$840

Framed: \$1100

Archival digital print on fine art paper
Size: 40cm x 73cm

It is exciting to introduce Paul Summerfield's curious, rich, dreamy, and sometimes comical landscapes to the GX Art Trail. Paul's artworks are all available either framed or as limited-edition prints. In Earth Stories Paul would like the viewer to imagine the story. Can you?

View this artwork at:

The Adelong – APA Homes
30 Yeomans Street, Strathnairn



Jennifer Kemarre Martiniello

Coil Basket D#1

POA

Glasswork | Hot blown glass with canes

Size: 13.5cm x 60cm x 13.5cm

Coil Basket D#1 beautifully exemplifies the transition of traditional Aboriginal weaving techniques in native flora to the contemporary medium of glass. Here, a basket reflects not only its original source but celebrates that practice through glass. The result is beautiful to look at and an affirmation of the relevance of Indigenous culture in contemporary visual arts.

View this artwork at:

The Adelong – APA Homes
30 Yeomans Street, Strathnairn



Avi Amesbury

Rare Earth, Light and Land I

\$620

Ceramic | Porcelain, volcanic ash and clay

Size: 55cm x 14cm x 14cm

Rare Earth, Light and Land I exemplifies the artist's preferred method of working in series. The 2 cylindrical vessels are lightly decorated with marks and lines that speak of the Australian bush landscape. The artist also captures the light of the bush in the luminosity that is embedded in each of the elegant vessels.

This artwork is no longer on display



Jenny Blake

Happy Shapes

\$350

Collage: Wallpaper/acrylic on canvas

Size: 76cm x 61cm

“During the 2020 lockdown, I gave myself permission to slow down, to be still. I found a new appreciate for the small things. Simple pleasures. Instead of going around and around and being addicted to being busy, I found stillness. I found my happy shape”

View this artwork at:

The Adelong – APA Homes
30 Yeomans Street, Strathnairn



Canberra Glassworks

The Geo Series – Teal

Jug: \$135

Tumbler: \$55

Glasswork | Mould blown glass
Size: Jug 23cm | Tumbler 10cm

The Geo Series jugs and tumblers showcase the skills of the local artists who designed these wares. While there is a familial resemblance across this series each piece is individually handmade.

View this artwork at:

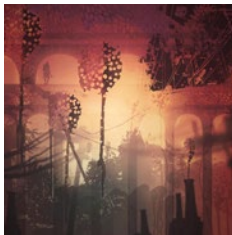
The Adelong – APA Homes
30 Yeomans Street, Strathnairn



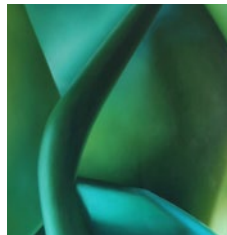
Ideal Building Solutions The Ainslie



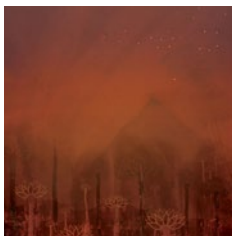
On display @ The Ainslie



Paul Summerfield
The Lost Bridge



Kate Bender
**It's So Peaceful
in the Deep**



Paul Summerfield
Sleeping Mountain



Nicole McLeod
Hector of Cooma

Paul Summerfield

The Lost Bridge

Unframed: \$160

Framed: \$240

Archival digital print on fine art paper
Size: 15cm x 15cm

The Lost Bridge is one of Paul's smallest artworks. Here he captures a city in transition. Buildings come and go, the city changes, however the aqueducts are lost in time.

View this artwork at:

The Ainslie – Ideal Building Solutions
24 Yeomans Street, Strathnairn



Paul Summerfield

Sleeping Mountain

SOLD

Archival digital print on fine art paper
Size: 40cm x 40cm

Paul describes the way Sleeping Mountain is about the dream world, and he imagines it bringing serenity in a bedroom setting. He also reminds viewers to bring their own stories and emotions to his work.

View this artwork at:

The Ainslie – Ideal Building Solutions
24 Yeomans Street, Strathnairn



Nicole McLeod

Hector of Cooma

SOLD

Photograph

Size: 51cm x 76cm

Hector of Cooma reveals not only the artist's technical expertise but also her love of animals and ability to capture their individual personalities.

View this artwork at:

The Ainslie – Ideal Building Solutions
24 Yeomans Street, Strathnairn



Kate Bender

It's So Peaceful In The Deep

\$1950

Painting | Oil on canvas

Size: 152cm x 137cm

It's so Peaceful in the Deep is concerned with light and colour. While her forms may derive from real sources her work has a strong abstract quality that gives it an atmospheric dreamlike quality.

View this artwork at:

The Ainslie – Ideal Building Solutions
24 Yeomans Street, Strathnairn



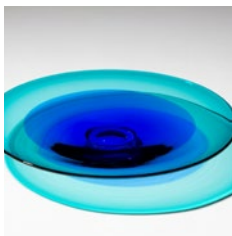
Gracious Living Constructions Avoca 265



On display @ Avoca 265



Al Phemister
Linear Pears



Canberra Glassworks
Platters Continuum

Al Phemister

Linear Pears

Large: \$1480

Medium: \$1250

Small: \$750

Steel sculpture

Size: large 1.8m x 1m | medium 1.4m x 0.8m | small 1m x 0.5m

Paul describes the way Sleeping Mountain is about the dream world, and he imagines it bringing serenity in a bedroom setting. He also reminds viewers to bring their own stories and emotions to his work.

View this artwork at:

Avoca 265 – Gracious Living Constructions
22 Yeomans Street, Strathnairn



Canberra Glassworks

Platters Continuum

\$280

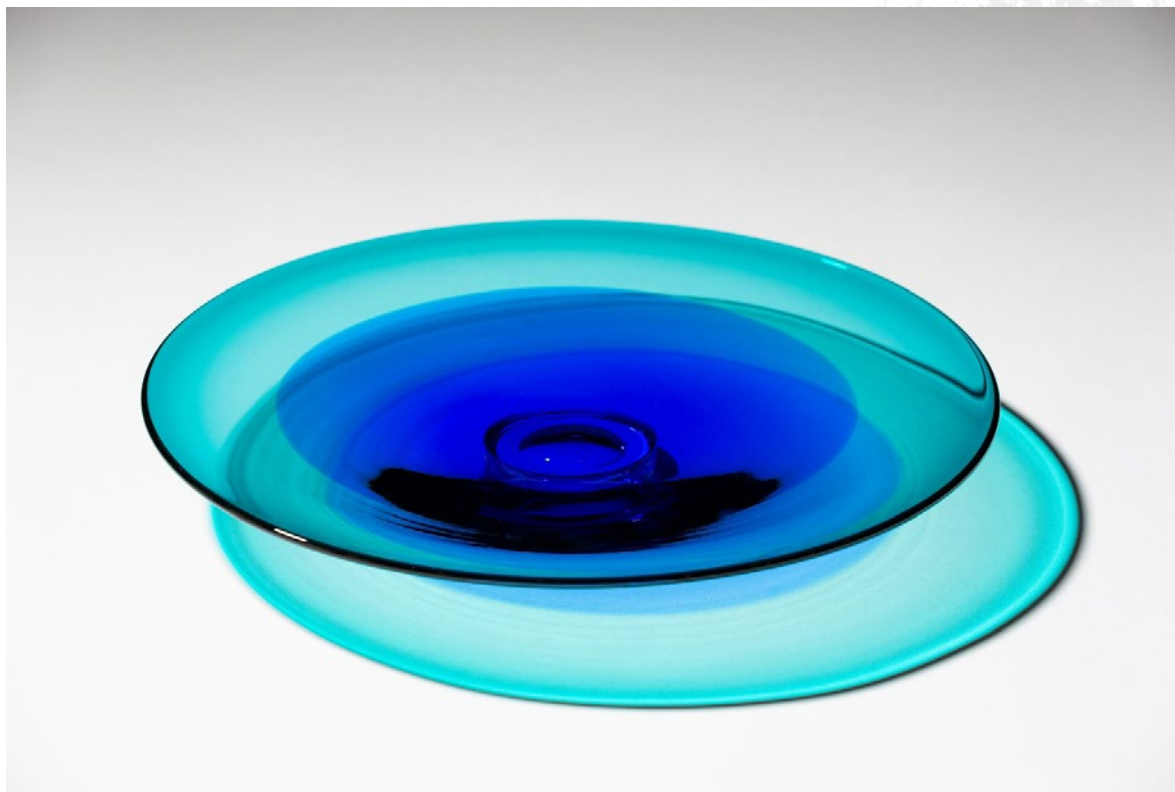
Glasswork | Hand-blown glass

Size: 34cm diameter

The elegant simplicity of these forms (designed by Jacqueline Knight, Manager of Production and Commissions at the Canberra Glassworks) demonstrates how domestic objects can be things of beauty while still serving a utilitarian purpose.

View this artwork at:

Avoca 265 – Gracious Living Constructions
22 Yeomans Street, Strathnairn



Achieve Homes Vivid



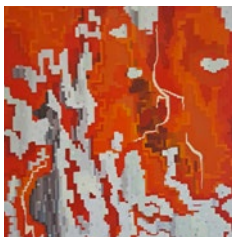
On display @ Vivid



Peter McLean
**The Living
Rock in Ruin**



Paul Summerfield
Fishing for Dreams 2



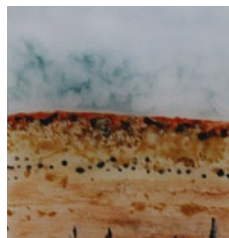
Rosemary von Behrens
***Eucalyptus Mannifera,*
Summer Bark**



Jenny Blake
Canberra Spring



Rosemary von Behrens
**Wind and
Water Worn 2**



Jennifer Kemarre Martiniello
Hillside Triptych

Peter McLean

The Living Rock in Ruin

\$420

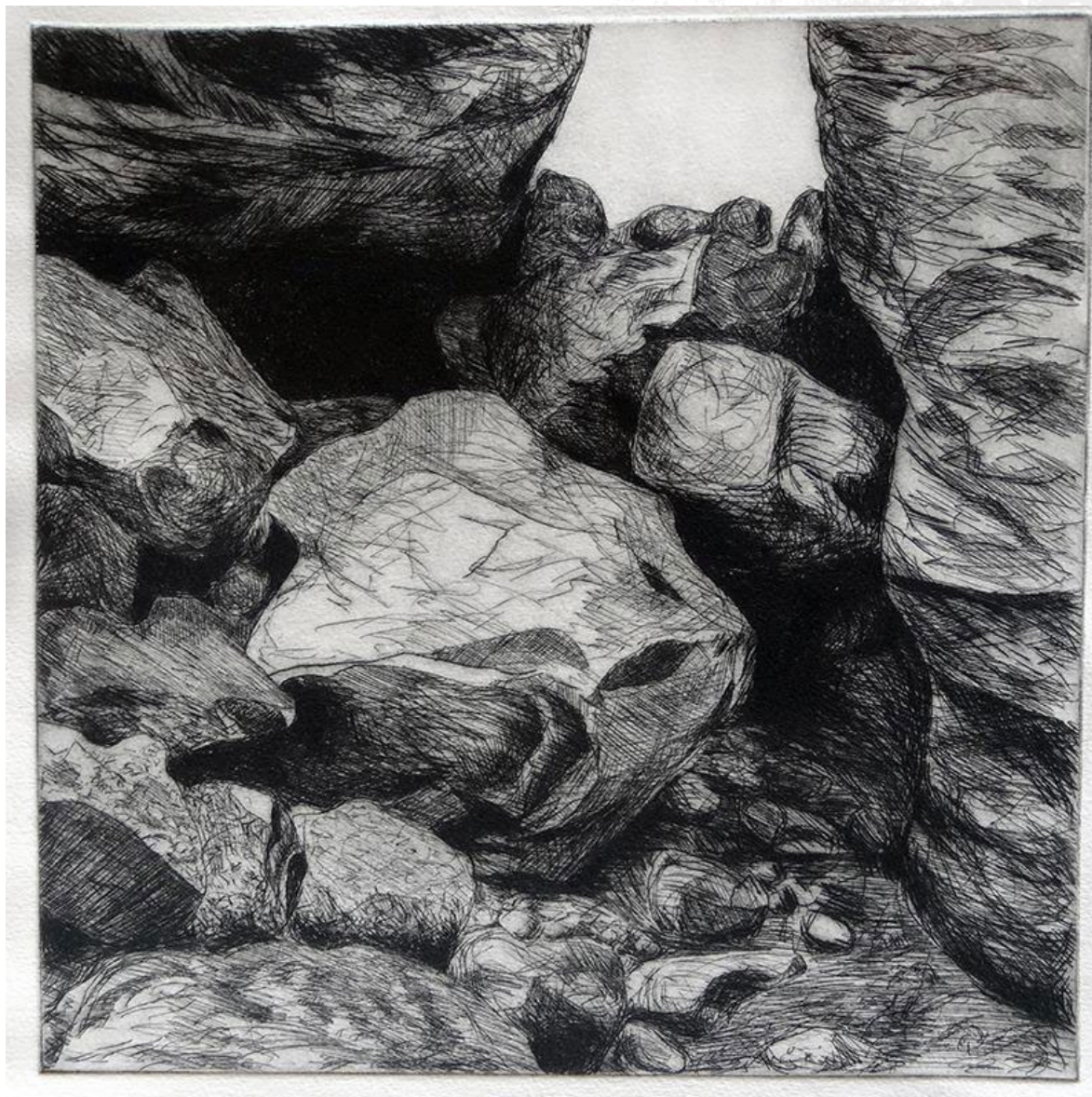
Etching on hahnemuhle paper
Size: 56cm x 40cm

Peter McLean is a recognized and established artist with a deep affinity for nature and the environment. He first studied biology and ecology and worked in science and conservation. Later Peter studied Fine Arts developing expertise in printmaking, drawing and installation. His work explores the materiality of nature, and our physical, emotional, and spiritual relationships with place.

The Living Rocks in Ruins has its foundation in a remote “magical” rainforest accessed via an ancient sandstone “incision”. Here Peter scratched directly with a steel point into a printing plate. He describes the evocative spirit of this place as “still and silent”, the clustering of rocks forever inhabiting the forest through the more rapid comings and goings of trees.

View this artwork at:

Vivid – Achieve Homes
12 Bon throne Street, Strathnairn



Rosemary von Behrens

Eucalyptus Mannifera, Summer Bark

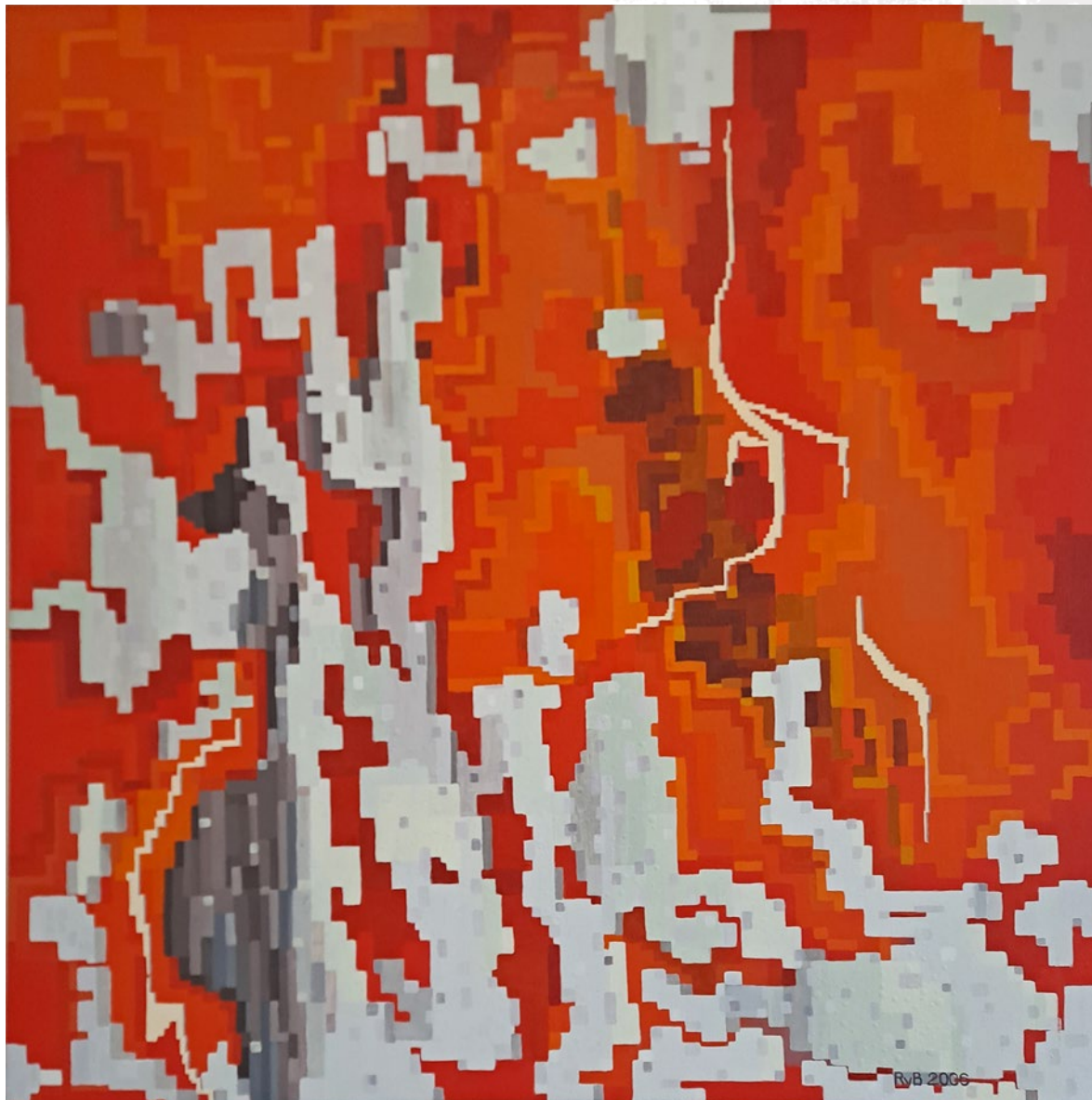
\$900

Oil on wooden panel
Size: 76cm x 76cm

Eucalyptus mannifera bark “has patches of red in summer before being shed in flakes.” Leon Costermans, “Native trees and shrubs of south-eastern Australia”, 1981. *E mannifera* is also known as Brittle Gum, or Red-spotted gum. I experimented with pixilation.

View this artwork at:

Vivid – Achieve Homes
12 Bonthrone Street, Strathnairn



Rosemary von Behrens

Wind and Water Worn 2

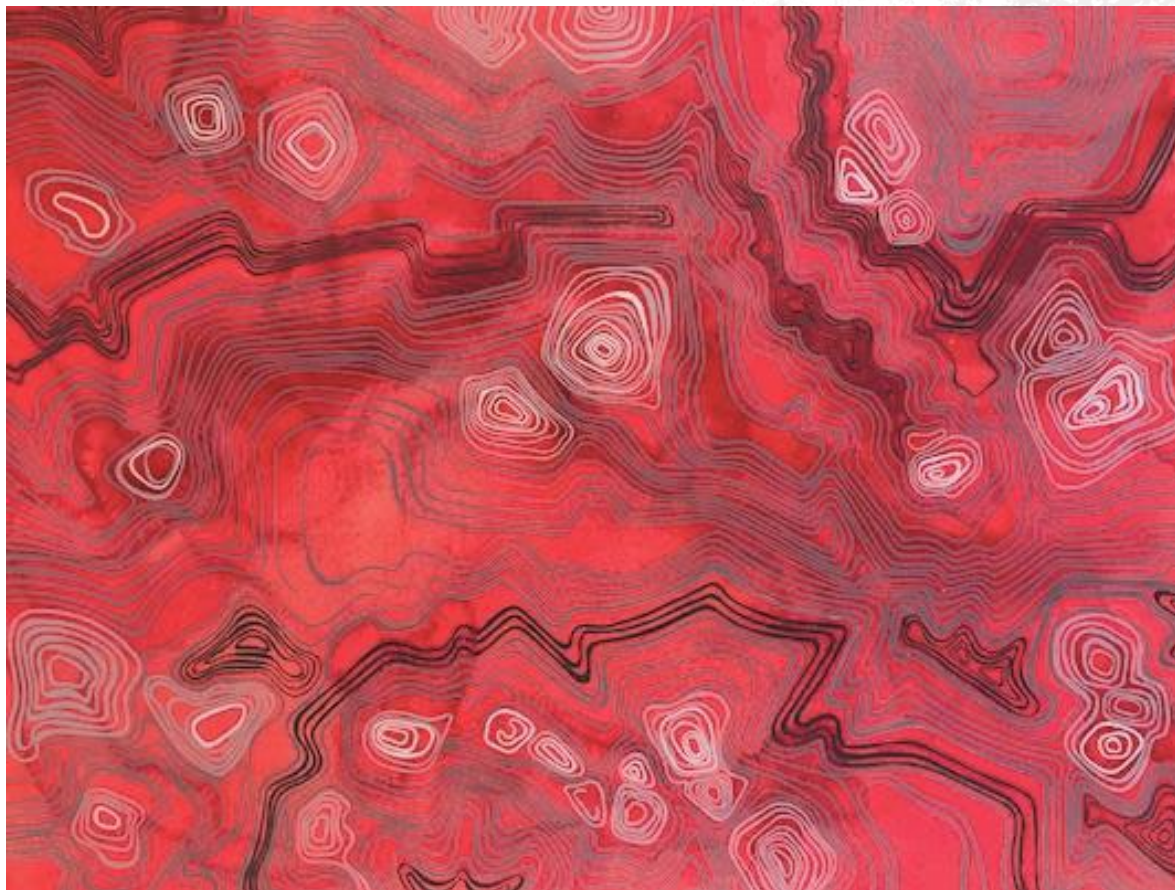
\$1000

Stretched canvas
Size: 80cm x 105.5cm

Dropped and eroded pieces of wood have the most fascinating lines worn into them. These lines are superimposed upon a canvas onto which acrylic paint has been poured.

View this artwork at:

Vivid – Achieve Homes
12 Bonthrone Street, Strathnairn



Paul Summerfield

Fishing for Dreams 2

Unframed: \$1700

Framed: \$2100

Archival digital print on fine art paper
Size: 80cm x 80cm

Fishing for dreams 2 is a story best told by Paul:

“Back in early 2008, I created an artwork called Fishing for dreams. It featured a somewhat hidden picture of me with my eyes closed, as if asleep. Funnily enough many people did not initially see my face in work and were very surprised to eventually see it. The work is about that moment between dreaming and wakefulness. That place where you are slipping away from everything and fishing for dreams.”

Paul Summerfield

View this artwork at:

Vivid – Achieve Homes
12 Bonthrone Street, Strathnairn



Jenny Blake

Canberra Spring

\$3600

Acrylic on stretch canvas

Size: 180cm x160cm

Jenny Blake describes Canberra Spring:

“The colours of Canberra are etched into this work with the bluest of blue skies. The sun is burning off a blurry grey winter’s fog. A myriad of colours bounce off the magical Brindabella Mountains. After a long winter, the trees are no longer bare. The painting captures the return of the vibrant colours of spring. Blake says: “The Canberra Spring is like seeing a dear friend after a long absence. Each Canberra spring makes my heart sing.”

View this artwork at:

Vivid – Achieve Homes

12 Bonthrone Street, Strathnairn



Jennifer Kemarre Martiniello

Hillside Triptych

\$2250

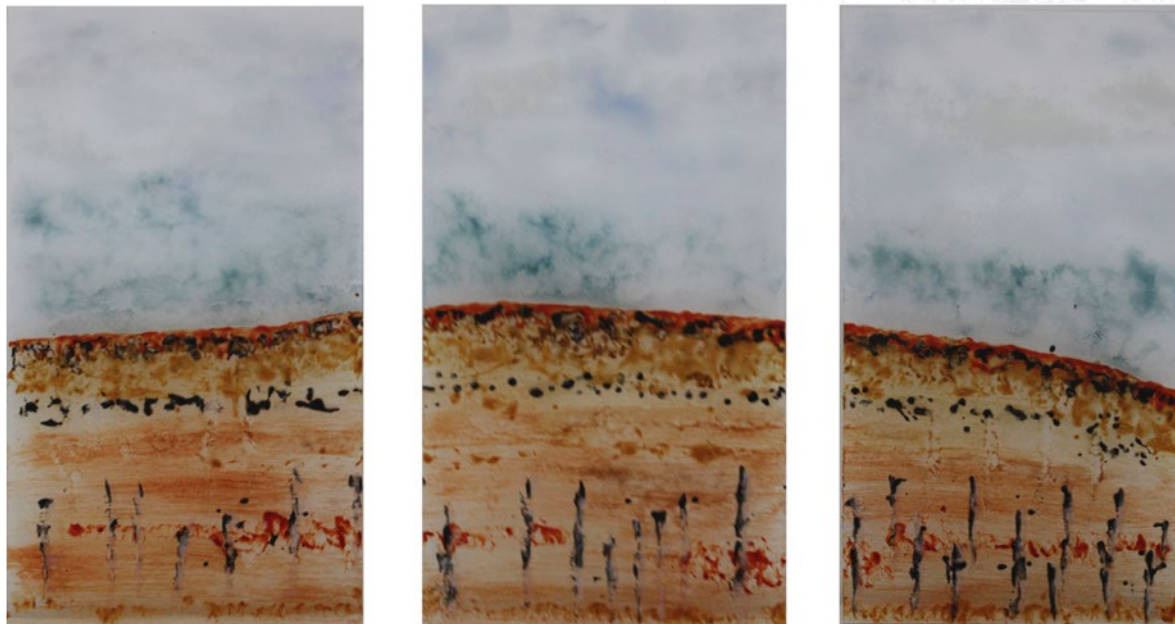
Glasswork | Powders, frits on bullseye glass

Size: 13.5cm x 60cm x 13.5cm

Hillside Triptych captures the immense distances that characterise the Australian outback in a simple and direct manner. The image is presented as 3 panels with the foreground of each comprising the hill of the title. The browns and ochres of the land are energised by the inclusion of a variety of marks representing various features of the landscape. These are suggestive of trees, rocks and other unspecified natural elements rather than realistically depicted. It is important to note the depth of research and technical skill required to produce this work.

View this artwork at:

Vivid – Achieve Homes
12 Bonthron Street, Strathnairn



EDC Exhibit Design and Construct Onyx



On display @ Onyx



Michele England
Coney Island



Canberra Glassworks
The Geo series – Teal

Michele England

Coney Island

\$245

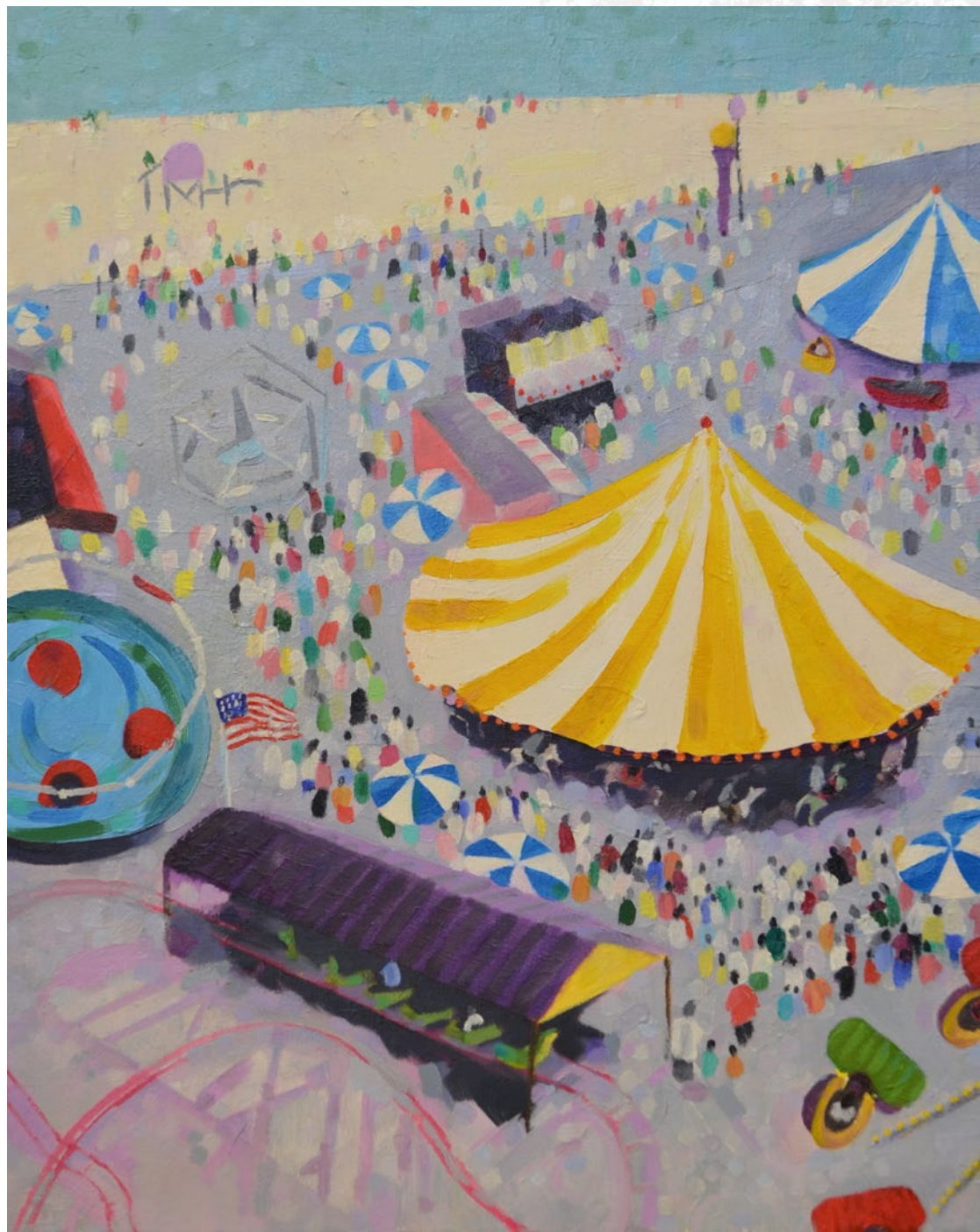
Painting | Oil on canvas

Size: 41cm x 51cm

Coney Island is a delightfully colourful depiction of the famous New York fun fair. The artist's use of a variety of bright colours added to the aerial viewpoint captures the vividness and human activity of her subject.

View this artwork at:

Onyx – Exhibit Design+Construction
33 Yeomans Street, Strathnairn



Canberra Glassworks

The Geo Series – Teal

Jug: \$135

Tumbler: \$55

Glasswork | Mould blown glass
Size: Jug 23cm | Tumbler 10cm

The Geo Series jugs and tumblers showcase the skills of the local artists who designed these wares. While there is a familial resemblance across this series each piece is individually handmade.

View this artwork at:

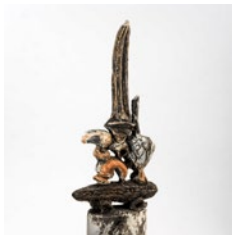
Onyx – Exhibit Design+Construction
33 Yeomans Street, Strathnairn



Rojas Constructions In Summer



On display @ In Summer



Elizabeth Charles
Shrine I

Elizabeth Charles

Shrine I

\$1800

Sculpture | Slips dry glaze on porcelain

Size: 70cm x 23cm x 12cm

Shrine I shows the artist's deep understanding and knowledge of the history of the ceramic medium and of art produced outside the Western canon. It also exemplifies her dedication to the vessel form as the most appropriate to showcase her syntheses of West African sculpture and other exotic cultural expressions into her contemporary ceramic idiom.

View this artwork at:

In Summer – Rojas Constructions

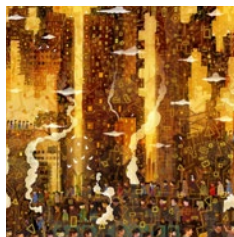
31 Yeomans Street, Strathnairn



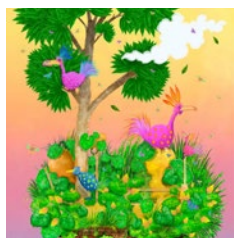
McDonald Jones Admiral



On display @ Admiral



Paul Summerfield
Night Falling



Paul Summerfield
The Tinkle Tinkle Birds

Paul Summerfield

Night Falling

Unframed: \$1500

Framed: \$2100

Archival digital print on fine art paper
Size: 95cm x 100cm

Paul describes Night Falling:

It is “loosely inspired by the iconic painting “Collins St., 5 pm” by John Brack. I asked friends, family and strangers if they wanted to be in my new digital painting. I ended up painting 87 people and 1 dog. I think the city at sunset is quite magical and it’s not quite clear why people are lining up. But perhaps it’s peak hour or they are lining up to get into a popular restaurant. Perhaps you have a better idea?”

View this artwork at:

Admiral – McDonald Jones
10 Bonthron Street, Strathnairn



Paul Summerfield

The Tinkle Tinkle Birds

Unframed: \$740

Framed: \$960

Archival digital print on fine art paper
Size: 30cm x 60cm

The Tinkle Tinkle Birds is an example of Paul's curious, rich, dreamy, and sometimes comical landscapes. All of Paul's artworks are available framed, or limited-edition prints. Paul describes this piece as the starting point for a story about the tinkle tinkle birds and their wild adventures; and it's a story that may be continued.

View this artwork at:

Admiral – McDonald Jones
10 Bonthron Street, Strathnairn



McDonald Jones Cullen



On display @ Cullen



Debra Jurss
Liftoff



Paul Summerfield
Searching For
A New Beginning

Debra Jurss

Liftoff

\$2700

Glasswork | Hot + kiln formed; hand polished

Size: 20cm x 59cm x 4cm

“I investigate the impact that natural environments can have on our emotions in my work. This work expresses the emotions triggered by watching deep ocean water, both soothing and rhythmic, but as the waves crash, triggering that ebullient lift in the spirits, that joyful love of the world that you’re a part of and the wide horizon stretching out before you. The work has been designed to convey the flow of deep ocean rolling waves and the contemplative experience of sitting high on a rocky headland on K’gari (Fraser Island) for so many hours of my life, watching the rhythm of the water all the way out to the horizon, and feeling the sharp hit of the sound of the waves crashing, the intense smell of the ozone, the change in the air around me, and the irresistible lift in my spirits.”

Debra Jurss

View this artwork at:

Cullen – McDonald Jones
8 Bonthron Street, Strathnairn



Paul Summerfield

Searching For A New Beginning

Unframed: \$190

Framed: \$280

Archival digital print on fine art paper
Size: 10cm x 32cm

Paul Summerfield's curious, rich, dreamy, and sometimes comical landscapes are all available either framed or as limited-edition prints.

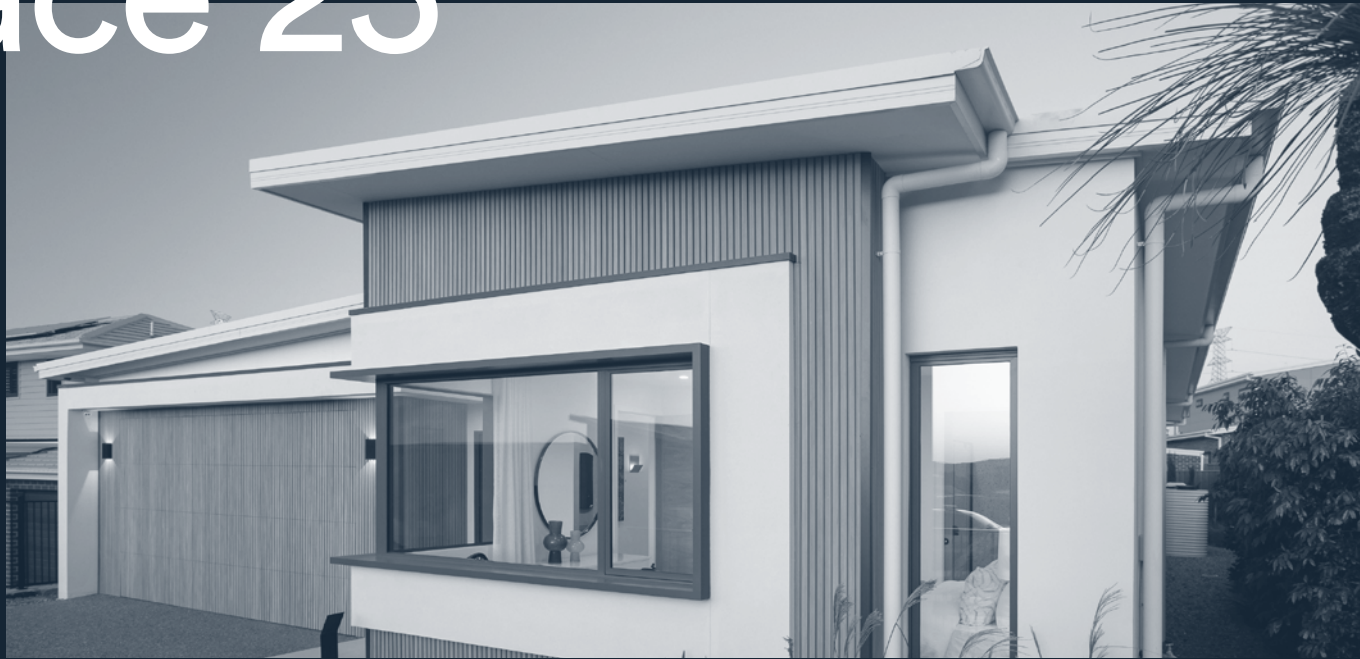
Searching for a new beginning is about personal life journeys, about searching and looking for what's next, or just around the corner.

View this artwork at:

Cullen – McDonald Jones
8 Bonthron Street, Strathnairn



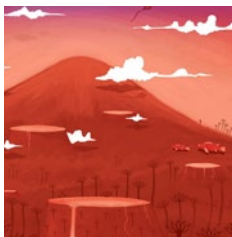
Rawson Homes Grace 25



On display @ Grace 25



Debra Jurss
Alpha and Omega



Paul Summerfield
Exploring Tyrrhenus Mons

Debra Jurss

Alpha and Omega

\$2900

Glasswork | Hot + kiln formed; hand polished

Size: 20cm x 55cm x 5cm

“I investigate the impact that natural environments can have on our emotions in my work. This work expresses the emotions triggered by watching deep ocean water, both soothing and rhythmic, but as the waves crash, triggering that ebullient lift in the spirits, that joyful love of the world that you’re a part of and the wide horizon stretching out before you. The work has been designed to convey the flow of deep ocean rolling waves and the contemplative experience of sitting high on a rocky headland on K’gari (Fraser Island) for so many hours of my life, watching the rhythm of the water all the way out to the horizon, and feeling the sharp hit of the sound of the waves crashing, the intense smell of the ozone, the change in the air around me, and the irresistible lift in my spirits.”

Debra Jurss

View this artwork at:

Grace 25 – Rawson Homes
3 Keach Close, Strathnairn



Paul Summerfield

Exploring Tyrrhenus Mons

Unframed: \$390

Framed: \$580

Archival digital print on fine art paper
Size: 40cm x 40cm

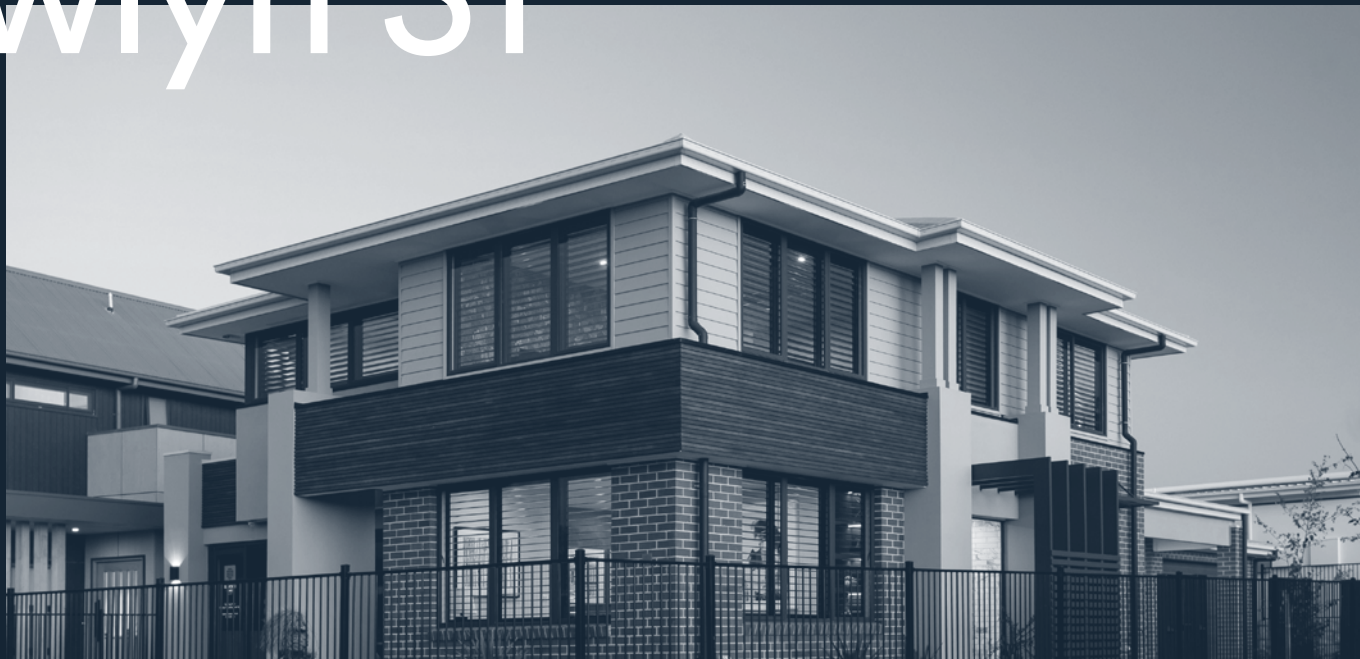
With the recognition that Humans will soon get to Mars, Paul playfully imagines people exploring the planet's volcanoes. Exploring Tyrrhenus mons is also inspired by Mount Yōtei in Hokkaido, Japan, a volcanic mountain that closely resembles Mount Fuji.

View this artwork at:

Grace 25 – Rawson Homes
3 Keach Close, Strathnairn



Rawson Homes Newlyn 31



On display @ Newlyn 31



Claire Primrose
Shepherd's Lookout

Claire Primrose

Shepherd's Lookout

\$2400

Painting | Mixed media on canvas
Size: 90cm x 110cm

Shepherd's Lookout captures the artist's memories of the dramatic vista over the Murrumbidgee Corridor from the tourist lookout situated close to the Ginninderry development. The textures, surfaces and colours of the landscape are beautifully depicted in this almost abstract composition.

View this artwork at:

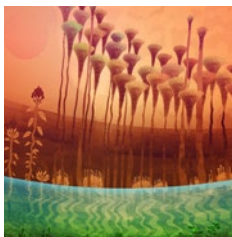
Newlyn 31 – Rawson Homes
1 Keach Close, Strathnairn



SM Precision The Alpine



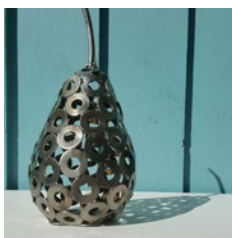
On display @ The Alpine



Paul Summerfield
**Forgotten Swamps
of Titan**



Nicole McLeod
Moroccan



Al Phemister
Washer Pear



Nicole McLeod
Hector

Paul Summerfield

Forgotten Swamps of Titan

Unframed: \$390

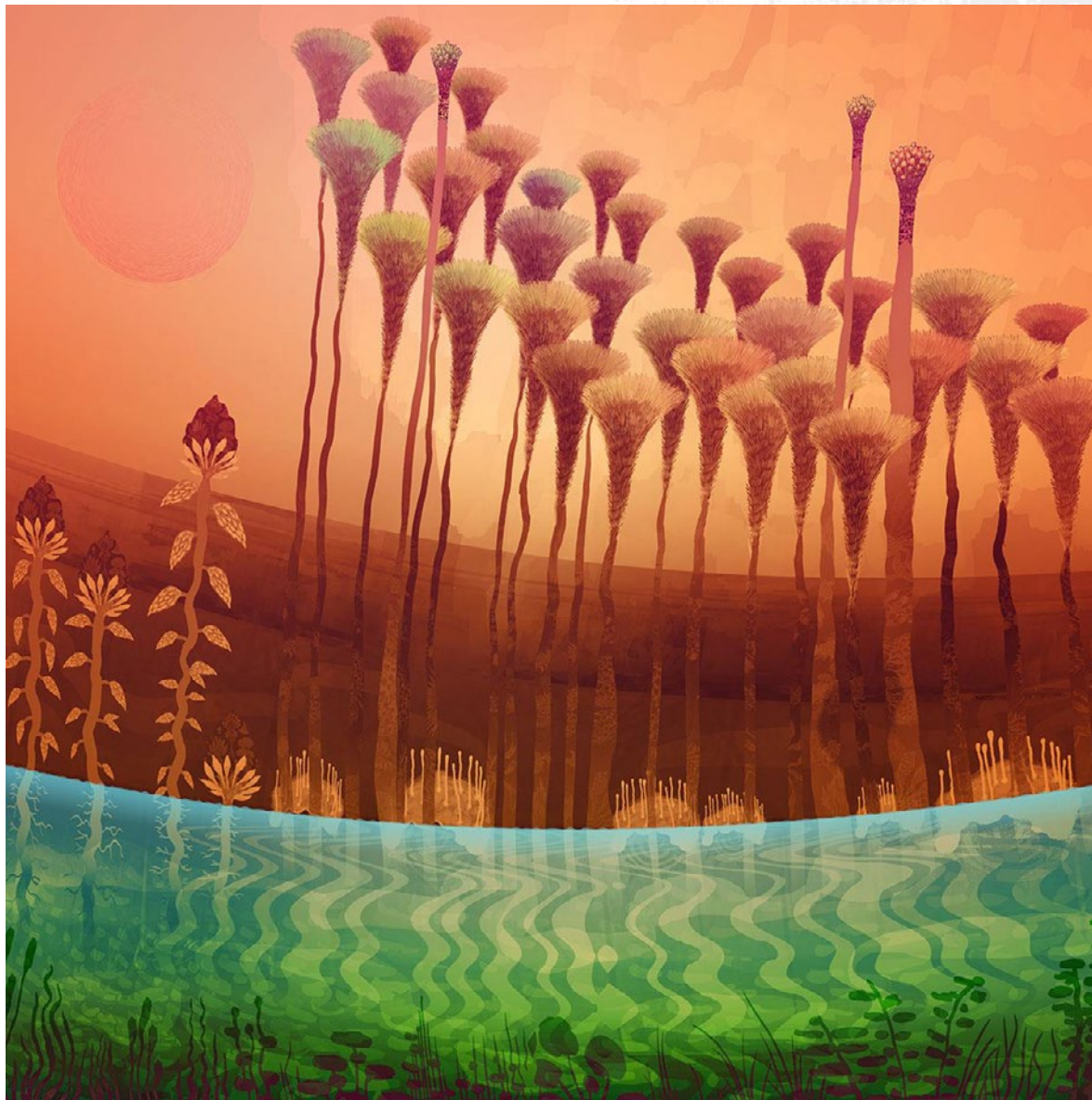
Framed: \$580

Archival digital print on fine art paper
Size: 40cm x 40cm

Saturn's largest moon, Titan, is one of the most Earth-like worlds in our solar system. According to scientists Titan has large lakes of the liquid compound 'ethane'. In Forgotten Swamps of Titan, Paul take us there, and imaginatively questions what the ethane lakes could look like.

View this artwork at:

The Alpine – SM Precision
25 Yeomans Street, Strathnairn



Al Phemister

Washer Pear

Small: \$180

Large: \$480

Sculpture | Steel

Size: Small 23cm | Large 45cm

Pear shows the artist's ongoing fascination with using the pear form and shaping it in metal (mostly steel). The opposites of the rounded shape of the pears (female) and the hardness of steel (male) give this work not only a pleasing physical presence but an underlying statement about the balance between male and female.

View this artwork at:

The Alpine – SM Precision
25 Yeomans Street, Strathnairn



Nicole McLeod

Hector

\$600

Photograph

Size: 51cm x 76cm

Hector reveals not only the artist's technical expertise but also her love of animals and ability to capture their individual personalities.

View this artwork at:

The Alpine – SM Precision
25 Yeomans Street, Strathnairn



Nicole McLeod

Moroccan

\$600

Photograph
Size: 51cm x 76cm

Moroccan reveals not only the artist's technical expertise but also her love of animals and ability to capture their individual personalities.

View this artwork at:

The Alpine – SM Precision
25 Yeomans Street, Strathnairn



Sienna Homes The Banksia



On display @ The Banksia



Valentyna Crane
**A Walk Under Ornamental
Pear Trees**

No longer on display



Valentyna Crane
**Flying Over The
Yerrabi Pond**



Paul Summerfield
**Osiris and the Thoughtful
Garden of Quetzalcoatl**

Paul Summerfield

Osiris and the Thoughtful Garden of Quetzalcoatl

Unframed: \$890

Framed: \$1140

Archival digital print on fine art paper
Size: 40cm x 80cm

In the Osiris and the Thoughtful Garden of Quetzalcoatl Paul brings entirely different tales together:

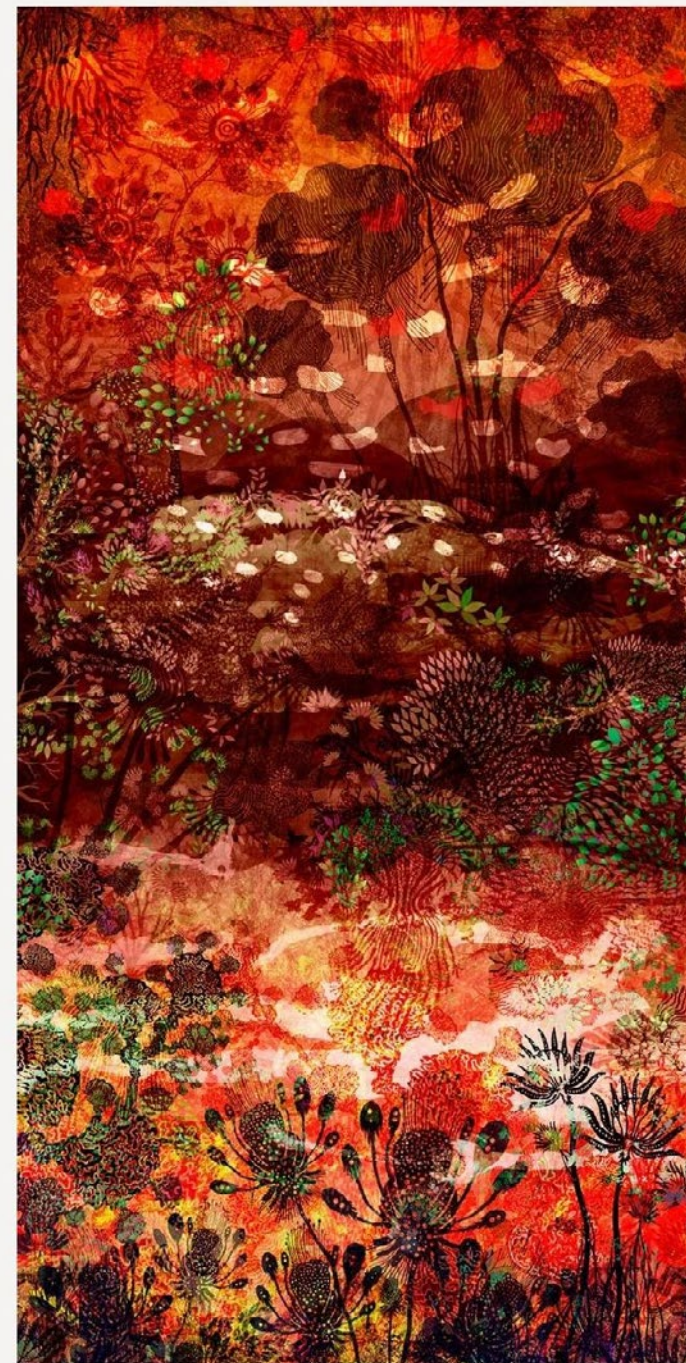
“King of the Living, Egyptian Lord of the Underworld and Judge of the Dead laying amongst a feathered-Serpents garden.” Paul was inspired by these stories about these very popular gods from completely separate cultures.

View this artwork at:

The Banksia – Sienna Homes
2 Folvig Close, Strathnairn



GX ART TRAIL @ GINNINDERRY



Valentyna Crane

A Walk Under Ornamental Pear Trees

\$2150

Acrylic on canvas
Size: 102cm x 102cm

'A walk under Ornamental Pear Trees' is from the project "Impressions of Canberra;" an exhibition of paintings that capture the changing seasons. A walk during autumn season along Lake Burley Griffin under the red canopy of ornamental pear trees.

This artwork is no longer on display



Valentyna Crane

Flying Over the Yerrabi Pond

\$1650

Acrylic on canvas
Size: 81cm x 106cm

Flying over the Yerrabi Pond is from the project “Dreams of my City;” a series of aerial paintings of Canberra. Valentyna takes you for a flight over the Yerrabi Pond, the northwestern part of Canberra. Yerrabi Pond is part of a chain of water bodies that act as a stormwater treatment system for urban run-off pollutants, protecting the water quality of the Murrumbidgee River. The water is used to irrigate nearby parks and sport ovals. Yerrabi pond was created in 1999 is the smallest and the most recent of the four lakes in Canberra.

View this artwork at:

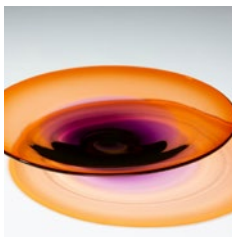
The Banksia – Sienna Homes
2 Folvig Close, Strathnairn



G.J Gardner The Long Island



On display @ The Long Island



Canberra Glassworks
Platters Continuum

Canberra Glassworks

Platters Continuum

\$280

Glasswork | Hand-blown glass

Size: 34cm diameter

The elegant simplicity of these forms (designed by Jacqueline Knight, Manager of Production and Commissions at the Canberra Glassworks) demonstrates how domestic objects can be things of beauty while still serving a utilitarian purpose.

View this artwork at:

The Long Island – GJ Gardener
1 Folvig Close, Strathnairn



Ginninderry Flexi Living: Profile



On display @ Profile



Paul Summerfield
Botanical Clouds



Paul Summerfield
Swirling Towards
Something Somewhere

Paul Summerfield

Botanical Clouds

Unframed: \$390

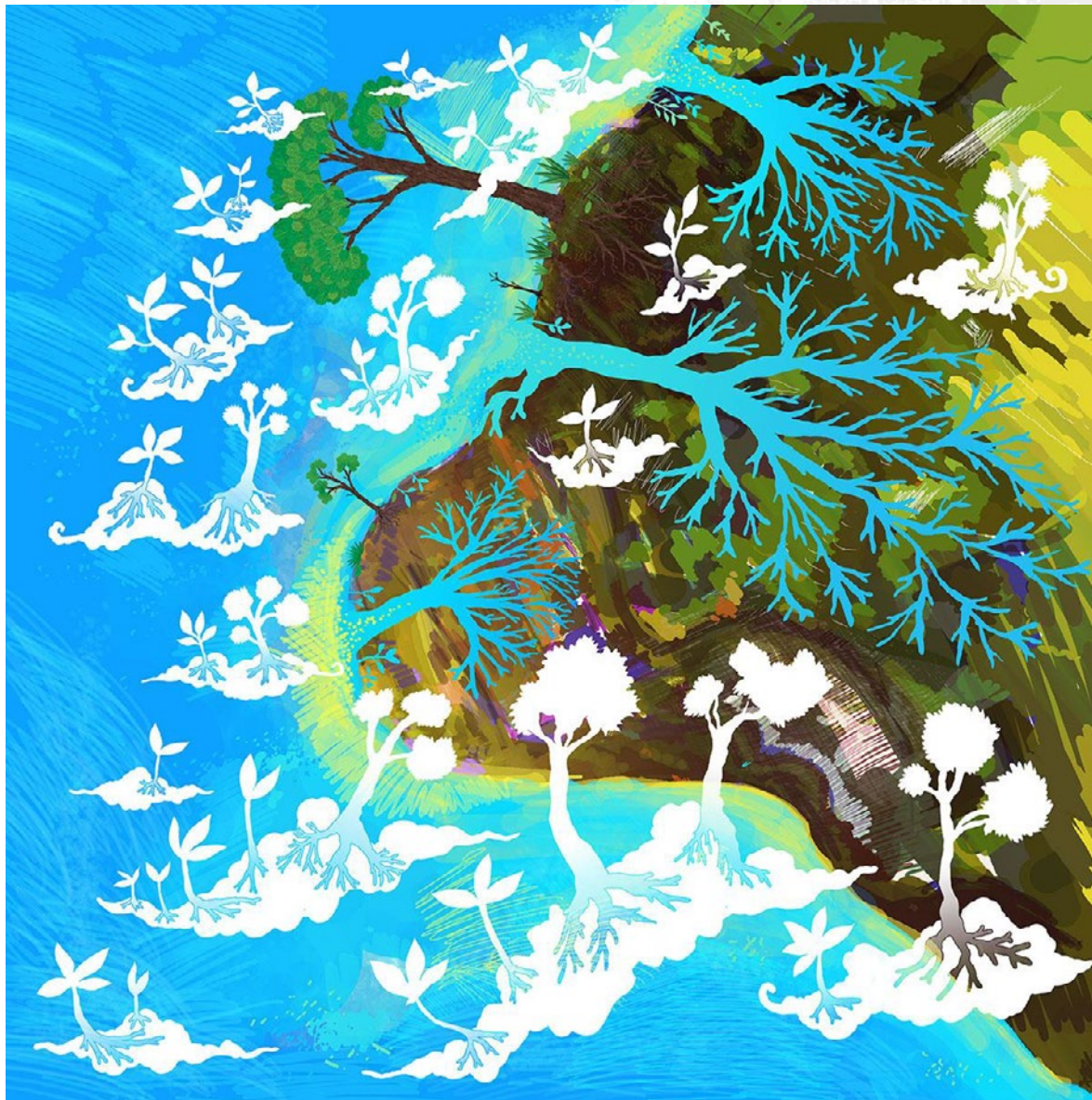
Framed: \$580

Archival digital print on fine art paper
Size: 40cm x 40cm

Botanical Clouds is a playful and compositionally surreal artwork that deliberately disorients our perspective. Paul started this piece as a drawing of Mt Majura in Canberra, however it evolved into a botanical cloudscape and landscape.

View this artwork at:

Flexi-Living: Profile – Ginninderry
2 Ferrari Court, Strathnairn



Paul Summerfield

Swirling Towards Something Somewhere

Unframed: \$340

Framed: \$540

Archival digital print on fine art paper
Size: 30cm x 30cm

In Swirling Towards Something Somewhere Paul takes us drifting into sleep and to the unconscious realm. Where do we go? Do we simply just vanish, or do we swirl towards something somewhere?

View this artwork at:

Flexi-Living: Profile – Ginninderry
2 Ferrari Court, Strathnairn



Coming soon



GX ART TRAIL @ GINNINDERRY

Jenny Blake

Rockfall

Framed: \$600

Collage: Wallpaper/acrylic

Size: 30cm x 30cm

“This past year has turned our world upside down and inside out. This work questions these rocky times as the future weighs on us like rocks. It is a balancing act. The painting caves, evokes peace of nature, and seeks equilibrium.”

Jenny Blake

View this artwork at:

Coming Soon



Paul Summerfield

Past Futures at the Dino Park Hotel

Unframed: \$850

Framed: \$1300

Archival digital print on fine art paper
Size: 50cm x 100cm

Paul Describes Past futures at the dino park hotel:

"I wrote a fun little story about this fantastic rustic hotel perched above a junk city. The work kind of evolved from that story into a playful look at what's been, what is and what possible futures could be. I think this work invites you to wonder about what's happening at the hotel and the stories it seems to be hinting at."

View this artwork at:

Framed print has been sold – however a limited number of unframed prints of this work are available.



GX ART TRAIL @ GINNINDERRY



Public art at Ginninderry



GX ART TRAIL @ GINNINDERRY

Sui Jackson

Common Ground II, 2021

Sui Jackson's Common Ground ii make use of local clay to connect the community to the public spaces, and the ground itself. Common Ground II is integrated within the wall in the amenities in Ginninderry's new community park, Paddy's Park

This is a delicate installation of decorated tiles. It represents a shared identity, an appreciation of sustainable local materials, and a deeper understanding of the land. The tiles here are made from the local clay sourced from groundwork excavations at Ginninderry. These tiles are stamped with found leaves, flowers and feathers to create a truly unique and local product.



Philip Spelman

Sculptural Chairs and Planter Boxes

As a practicing sculptor for the past 30 years, Spelman works in painted steel, and maintains a broad professional arts practice. Three of Phil Spelman's sculptural chairs (located on the banks of the Link pond), and two of his planter boxes (located in the Link Play Space) have been gifted to Ginninderry by artsACT.

Spelman's sculptures are abstract constructions where elements balance, tumble and float creating positive and negative compositions of space, light and shade. His works are held in many public, private and corporate collections, nationally and internationally.



G. W. Bot

Little Eagle Glyph, 2019

G. W. Bot is recognized a painter, printmaker and sculptor who lives and works in Canberra. Bot is the creator of Ginninderry's landmark sculpture The Little Eagle Glyph, a sculpture that greets visitors to the suburb of Strathnairn and symbolises the sense of place and connection with the land that underlies the Ginninderry development.

Little Eagle Glyph is now an asset of the ACT Government and is a highly significant addition to the public art collection managed by artsACT.



Who Am I And Who Is My Mob

The Ginninderry JV partnered with the Tuggeranong Arts Centre in 2018 to deliver the Messenger Program's Aboriginal art initiative - 'Who Am I and Who Is My Mob' standing pole project. The Messengers Program is an arts-based early support program for young people who are experiencing signs of anxiety, depression and other mental health issues. The program also assists young people to explore personal and gender identity. At risk young people aged 12 – 25 years are offered an artsbased approach that builds resilience, improves mental health and young people's acceptance of their diversity.

The program teaches young people creative skills across a range of artistic mediums, including visual arts, performing arts and digital and cross-art forms.



Jo Hollier

DarkForest, 2017

Dark Forest is an etching by Jo Hollier, a Strathnairn Arts Association studio holder. Inspired by the natural beauty of local Yellow Box Gum woodlands the composition depicts one of the iconic natural symbols of the Ginninderry project. This image was purchased for licensed use by Riverview Projects and reinterpreted in the large steel doors at the Link using a laser perforation technique.

The door panels are a great example of how art can be seamlessly integrated into architecture delivering a strong visual impact as one approaches the building.



G. W. Bot

Design Library Mini-G

Have you seen the 'Mini-G'? The 'Mini-G' is a fully furnished 27sqm tiny house, located within the Ginninderry GX Display Village. It is designed to challenge people's views on how homes are designed, and the space that you need to live.

As part of Ginninderry's Design Library, artwork by G.W.Bot is integrated within the façade of the 'Mini-G'; this artwork is emblematic of the visual language, that she calls "glyphs"; a consistent theme of all her work.

The Design Library has been established to provide place recognition and artistic continuity across the Ginninderry project in the building of quality open spaces which enhance the public realm.



Al Phemister

Dandelions 2017

Al Phemister is a sculptor and arts advocate living in Yass. This series tells a story that we all relate to. Picking and blowing dandelions ('Wishes'), is something that we all have done, and continue to see children do today. Standing more than 2 metres tall in the landscape and they seem to float and gently move in the breeze as they are scattered by the wind.



Bronwyn Berman

Circle of Stones

The Circle of Stones sculpture is a response to community consultation received at the 'Charny Carny' community festival in March 2017.

Year 9 and 10 students from Kingsford Smith School worked with Ginninderra Rotary and Ginninderry to create a model of a park which they brought to Charny Carny for people to conceptualise their ideas using tactile materials.

Participants were invited to imagine what they would like to be included into the parklands of Ginninderry. The many ideas put forward were distilled to a selection of 'highly rated items' using a survey of students from years K to 10 at the local Kingsford Smith School. On presentation of these highly rated items to the design team, one concept was immediately nominated for realisation in Ginninderry's entry park. This was a suggestion from a young student, that in the new park there should be 'a relaxing circle of stones'.

Artist Bronwyn Berman was commissioned to create a design based on this original concept which was selected and subsequently funded by Ginninderra Rotary. Together they worked to create the final installation which is now in place.

Sensitive plantings of shrubs and trees planted to the east and south east allow for privacy and a sense of discovery whilst maintaining views from the pathway. On arrival to the space, the visitor discovers a circle of randomly placed granite boulders. The level ground of the installation rises to the east providing a stone seat on which to sit and enjoy the view toward the mountains.

The sculpture was developed, from its inception, to communicate the universal, sacred and divine. The circle represents the infinite, inclusivity and wholeness of nature and draws from the Celtic tradition which utilised stones as places of contemplation.





Create*

The Ginninderry
Arts Program

ginninderry.com

Arts Trail Catalogue

Bode (RAM) Modhaus 2.0



Arts Trail Catalogue

APA The Adelong



Arts Trail Catalogue

Ideal Building Solutions The Ainslie



Arts Trail Catalogue

Achieve Homes Vivid



Arts Trail Catalogue

EDC Exhibit Design and Construct Onyx



Arts Trail Catalogue

Rojas Constructions In Summer



Arts Trail Catalogue

McDonald Jones Admiral



Arts Trail Catalogue

McDonald Jones Cullen



Arts Trail Catalogue

Rawson Homes Grace 25



Arts Trail Catalogue

Rawson Homes Newlyn 31



Arts Trail Catalogue

SM Precision The Alpine



Arts Trail Catalogue

SM Precision The Banksia

Arts Trail Catalogue

G.J Gardner The Long Island



Arts Trail Catalogue

Ginninderry Flexi Living Profile

