



Strathnairn

Ginninderry

Flexi-living Series

Trio



2 BED



2 BATH



1 CAR



MIN EER 6

LOWER LIVING: 56.31m² | UPPER LIVING: 58.37m² | TOTAL LIVING AREA: 114.68m²
1 CAR GARAGE: 23.5 m² | LAND: 126m²

Features + Inclusions

- Two colour schemes to choose from
- Your choice of Bosch or Ariston stainless steel appliances with Baumatic induction cooktop
- 2.7m high ceiling in the living area, with LED downlights
- Laminated timber flooring in living and kitchen area
- Carpet in hallways, rumpus room, study and bedrooms
- Caesarstone bench top
- Dishwasher included
- 2kW PV Panels with inverter and Home Energy Management System
- Electric heat pump
- Reverse cycle heating and cooling in living area and master bedroom
- Single car garage with remote controlled door and additional storage space
- Master bedroom with ensuite and walk in robe
- Generous second bedroom with built in robe
- Downstairs rumpus room and study area upstairs
- Landscaping and fencing included
- Double glazing

Note: Owing to the current COVID lockdown, indicative photos of existing homes are not currently available. The above Elevation from the proposed contract plan has been used here for illustrative purposes.

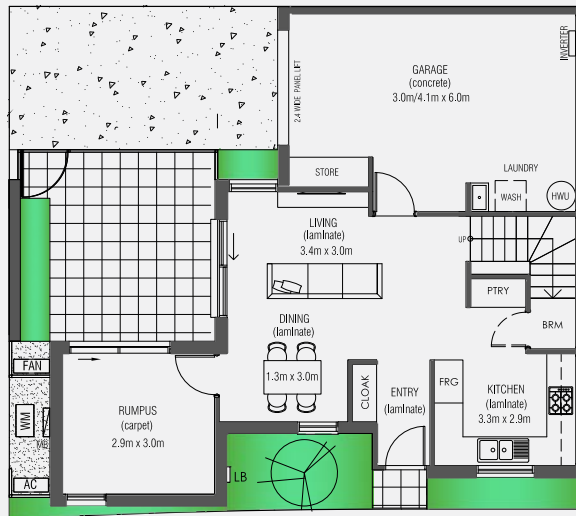


Strathnairn

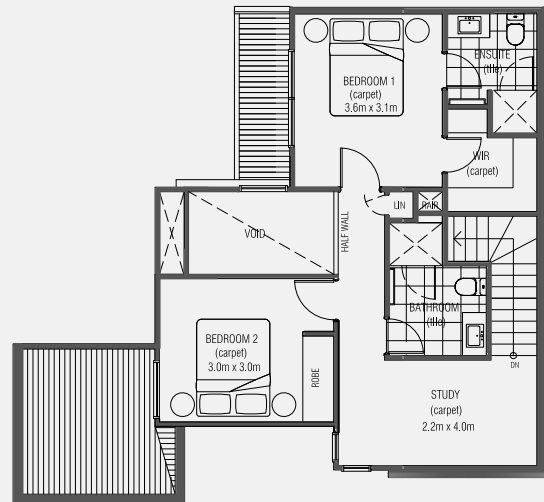
Ginninderry

Flexi-living Series

Trio



GROUND FLOOR



FIRST FLOOR

Ginninderry

Contact Ginninderry
sales@ginninderry.com
1800 316 900

Licence No. ACT 18402184
ABN 53 605 266 402

ginninderry.com



Suburban Land
Agency



Disclaimer: Floor plans and perspectives shown are artists impressions only. Any references to size or dimensions are approximate and are not intended to be precise. The information contained in this document/other accompanying material/mediums is provided for information purposes only. All rights and responsibilities of the Seller, the Builder and the Buyer (including prices) will be contained in a land sale contract between the Seller and the Buyer and a home build contract between the Buyer and the Builder. The Buyer should make their own enquiries and seek legal advice as to the terms of these contracts. The Builder disclaims all liability with respect to all information and material provided with this document/other accompanying material/mediums. Copyright for the floor plan designs are owned by the Ginninderry Joint Venture and must not be copied or distributed without The Ginninderry Joint Venture's prior written permission.